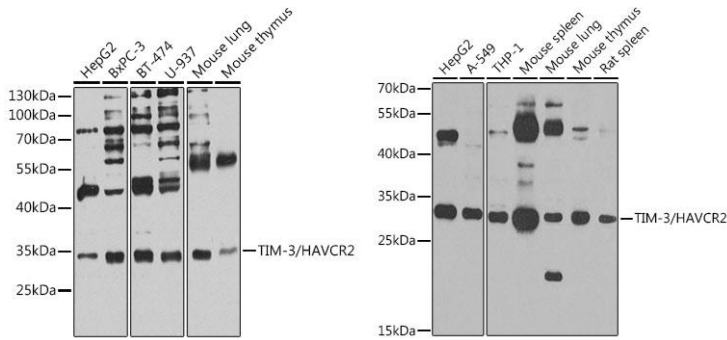


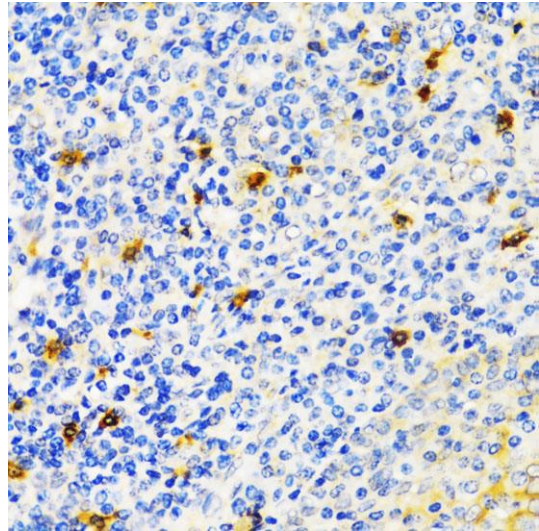
---

<b>Product name:</b>	CD366 / TIM-3/ (HAVCR2)
<b>Cat number:</b>	AB-84287
<b>Size:</b>	100ug
<b>Clone:</b>	POLY
<b>Concentration:</b>	1mg/ml
<b>Host:</b>	Rb
<b>Isotype:</b>	IgG
<b>Immunogen:</b>	Recombinant fusion protein containing a sequence corresponding to amino acids 22-202 of human TIM-3/HAVCR2
<b>Reactivity:</b>	Hu, Ms, Rt
<b>Applications:</b>	Western Blot: 1:500 - 1:1000 Immunohistochemistry: 1:50 - 1:200
<b>Molecular Weight:</b>	33kDa
<b>Purification:</b>	Aff. Pur.
<b>Form:</b>	Liquid
<b>Buffer:</b>	PBS with 0.02% sodium azide, 50% glycerol, pH7.3
<b>Storage:</b>	Store at -20°C, and avoid repeat freeze-thaw cycles.
<b>Background:</b>	<p>The protein encoded by this gene belongs to the immunoglobulin superfamily, and TIM family of proteins. CD4-positive T helper lymphocytes can be divided into types 1 (Th1) and 2 (Th2) on the basis of their cytokine secretion patterns. Th1 cells are involved in cell-mediated immunity to intracellular pathogens and delayed-type hypersensitivity reactions, whereas, Th2 cells are involved in the control of extracellular helminthic infections and the promotion of atopic and allergic diseases. This protein is a Th1-specific cell surface protein that regulates macrophage activation, and inhibits Th1-mediated auto- and alloimmune responses, and promotes immunological tolerance</p>



Western blot analysis of extracts of various cell lines, using TIM-3/HAVCR2 antibody at 1:1000 dilution. Secondary antibody: HRP Goat Anti- Rabbit IgG (H+L) at 1:10000 dilution. Lysates/proteins: 25ug per lane. Blocking buffer: 3% nonfat dry milk in TBST. Detection: ECL Bas Exposure time: 10s.

Western blot analysis of extracts of various cell lines, using TIM-3/HAVCR2 antibody at 1:1000 dilution. Secondary antibody: HRP Goat Anti- Rabbit IgG (H+L) at 1:10000 dilution. Lysates/proteins: 25ug per lane. Blocking buffer: 3% nonfat dry milk in TBST. Detection: ECL West Pico Plus. Exposure time: 30s.



Immunohistochemistry of Paraffin embedded human tonsil using TIM-3/HAVCR2 antibody At dilution of 1:200 (40x lens).