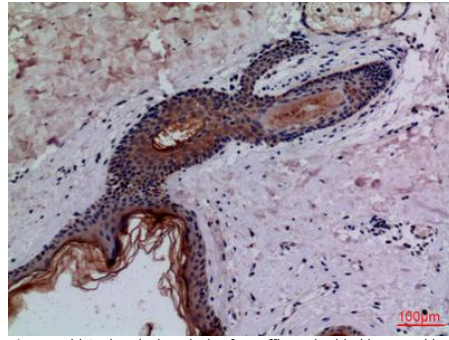
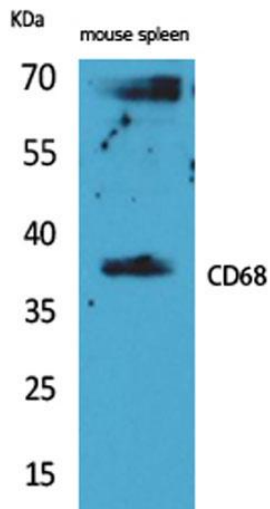
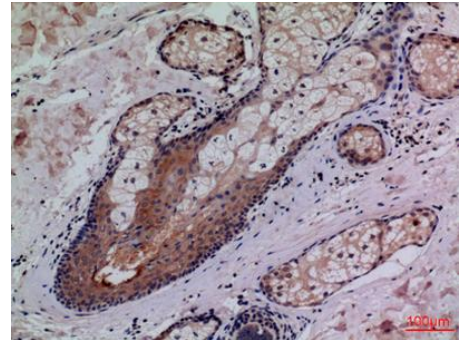
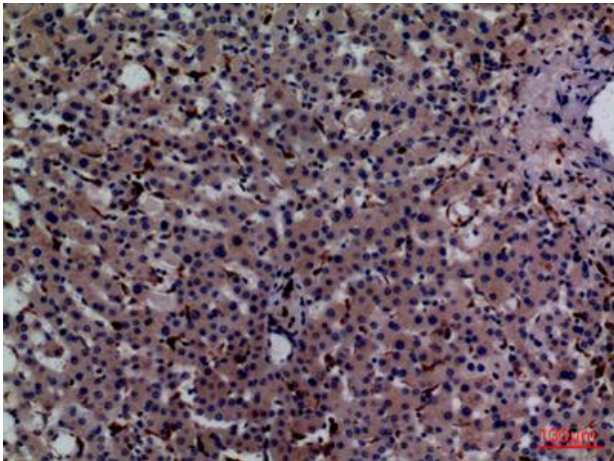

Product name:	CD68 Rabbit Polyclonal Antibody
Cat number:	AB-84755
Conjugate:	Unconjugated
Size:	100 ug
Clone:	POLY
Concentration:	1mg/ml
Host:	Rabbit
Isotype:	IgG
Immunogen:	The antiserum was produced against synthesized peptide derived from the Internal region of human CD68. AA range:171-220.
Reactivity:	Human
Applications:	Western Blot: 1/500 - 1/2000. Immunohistochemistry (paraffin-embedded tissues) 1:100-300 Immunofluorescence ELISA: 1/20000.
Molecular Weight:	37kD
Purification:	The antibody was affinity-purified from rabbit antiserum by affinity-chromatography using epitope-specific immunogen.
Form:	Liquid
Buffer:	Liquid in PBS containing 50% glycerol, 0.5% BSA and 0.02% sodium azide.
Storage:	Store at -20°C. Avoid repeated freeze-thaw cycles.
Background:	This gene encodes a 110-kD transmembrane glycoprotein that is highly expressed by human monocytes and tissue macrophages. It is a member of the lysosomal/endosomal-associated membrane glycoprotein (LAMP) family. The protein primarily localizes to lysosomes and endosomes with a smaller fraction circulating to the cell surface. It is a type I integral membrane protein with a heavily glycosylated extracellular domain and binds to tissue- and organ-specific lectins or selectins. The protein is also a member of the scavenger receptor family. Scavenger receptors typically function to clear cellular debris, promote phagocytosis, and mediate the recruitment and activation of macrophages. Alternative splicing results in multiple transcripts encoding different isoforms.



Immunohistochemical analysis of paraffin-embedded human-skin, antibody was diluted at 1:100.



Immunohistochemical analysis of paraffin-embedded human-skin, antibody was diluted at 1:100.



Immunohistochemical analysis of paraffin-embedded human-liver, antibody was diluted at 1:100.