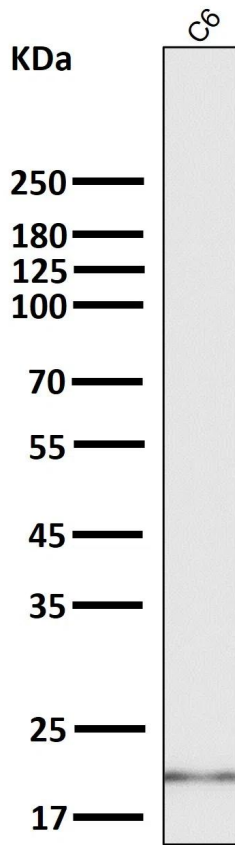
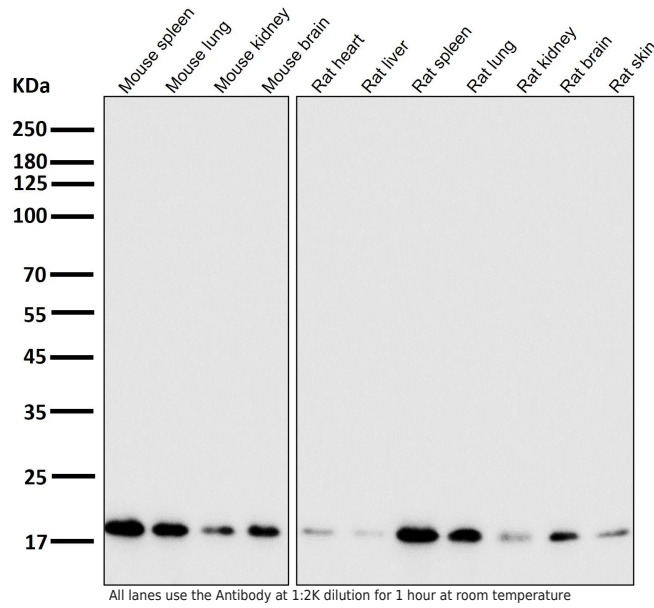
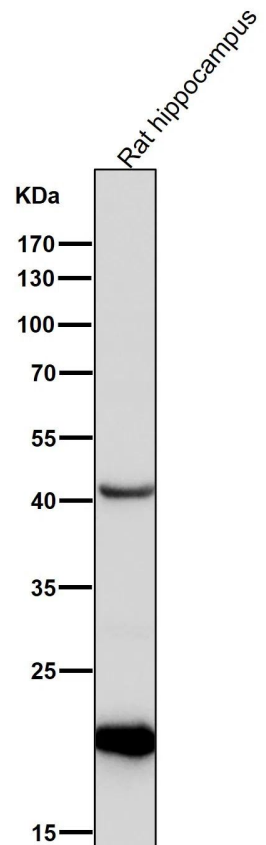

Product name:	CDC42 Rabbit Monoclonal Antibody
Cat number:	MABN83871
Conjugate:	Unconjugated
Size:	100µL
Concentration:	1mg/ml
Host:	Rabbit
Isotype:	IgG
Immunogen:	A synthesized peptide derived from human CDC42.
Reactivity:	Human,Mouse,Rat
Applications:	WB 1:1000-1:2000,IHC 1:100-1:200,FC 1:20-1:100,IP 1:20-1:50
Molecular Weight:	21 kDa
Purification:	Affinity purification
Form:	liquid
Buffer:	Purified antibody in PBS with 0.05% sodium azide,0.05% protective protein and 50% glycerol.
Storage:	Store at 4°C short term. Aliquot and store at -20°C long term. Avoid freeze/thaw cycles.
Background:	Plasma membrane-associated small GTPase which cycles between an active GTP-bound and an inactive GDP-bound state. In active state binds to a variety of effector proteins to regulate cellular responses. Involved in epithelial cell polarization processes. Regulates the bipolar attachment of spindle microtubules to kinetochores before chromosome congression in metaphase.



All lanes use the Antibody at 1:2K dilution for 1 hour at room temperature



All lanes use the Antibody at 1:2K dilution for 1 hour at room temperature



All lanes use the Antibody at 1:2K dilution for 1 hour at room temperature