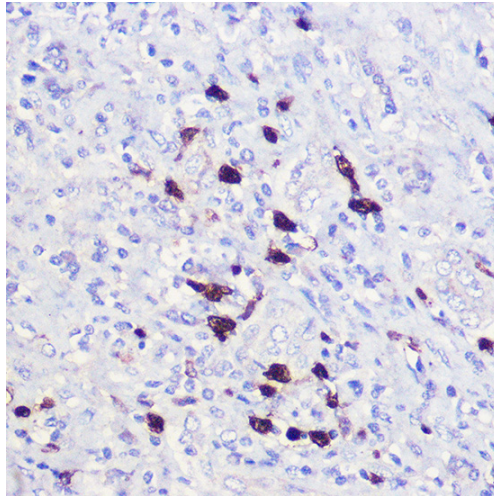
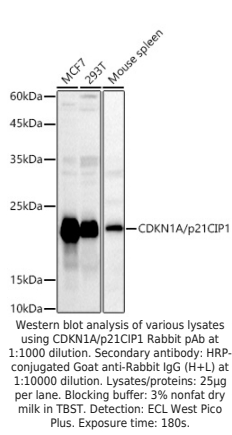
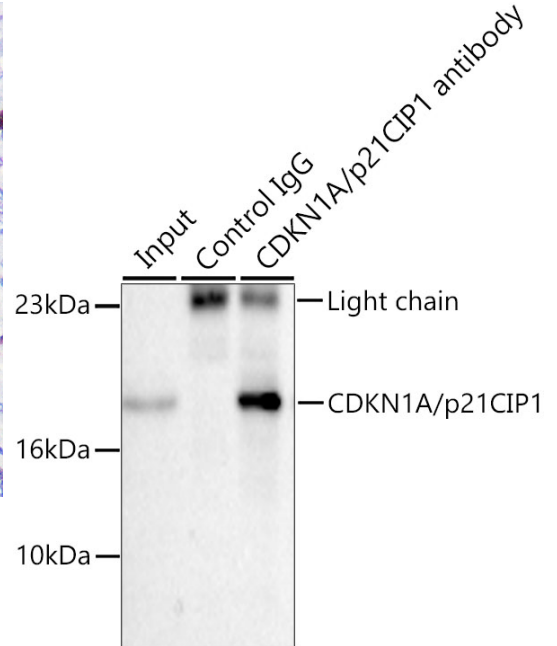

Product name:	CDKN1A/p21CIP1 Rabbit Polyclonal Antibody
Cat number:	AB2691
Conjugate:	Unconjugated
Size:	100 ug
Concentration:	1mg/ml
Host:	Rabbit
Isotype:	IgG
Immunogen:	Recombinant protein.This information is considered to be commercially sensitive.
Reactivity:	Human,Mouse
Applications:	WB 1:500 - 1:1000 IHC-P 1:50 - 1:200 IP 0.5µg-4µg antibody for 200µg-400µg extracts of whole cells ELISA Recommended starting concentration is 1 µg/mL. Please optimize the concentration based on your specific assay requirements.
Molecular Weight:	18kDa(Mouse)/21kDa(Human/Rat)/21KD
Purification:	Affinity purification
Form:	liquid
Buffer:	PBS with 0.09% Sodium azide,50% glycerol,pH7.3.
Storage:	Store at -20°C. Avoid freeze / thaw cycles.
Background:	<p>This gene encodes a potent cyclin-dependent kinase inhibitor. The encoded protein binds to and inhibits the activity of cyclin-cyclin-dependent kinase2 or -cyclin-dependent kinase4 complexes, and thus functions as a regulator of cell cycle progression at G1. The expression of this gene is tightly controlled by the tumor suppressor protein p53, through which this protein mediates the p53-dependent cell cycle G1 phase arrest in response to a variety of stress stimuli. This protein can interact with proliferating cell nuclear antigen, a DNA polymerase accessory factor, and plays a regulatory role in S phase DNA replication and DNA damage repair. This protein was reported to be specifically cleaved by CASP3-like caspases, which thus leads to a dramatic activation of cyclin-dependent kinase2, and may be instrumental in the execution of apoptosis following caspase activation. Mice that lack this gene have the ability to regenerate damaged or missing tissue. Multiple alternatively spliced variants have been found for this gene.</p>



Immunohistochemistry analysis of paraffin-embedded Human liver using CDKN1A/p21CIP1 Rabbit pAb at dilution of 1:100 (40x lens). High pressure antigen retrieval performed with 0.01M Citrate buffer (pH 6.0) prior to IHC staining.



Immunoprecipitation of CDKN1A/p21CIP1 from 200 µg extracts of MCF7 cells was performed using 0.5 µg of CDKN1A/p21CIP1 Rabbit pAb. Rabbit IgG isotype control was used to precipitate the Control IgG sample. IP samples were eluted with 1X Laemmli Buffer. The Input lane represents 10% of the total input. Western blot analysis of immunoprecipitates was conducted using CDKN1A/p21CIP1 Rabbit pAb at a dilution of 1:500.