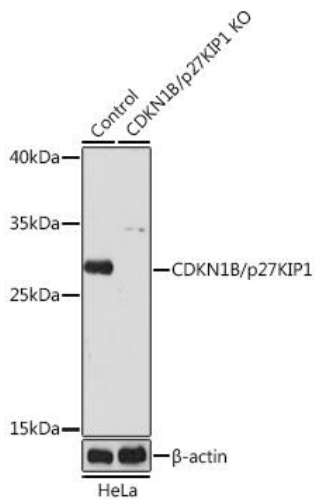
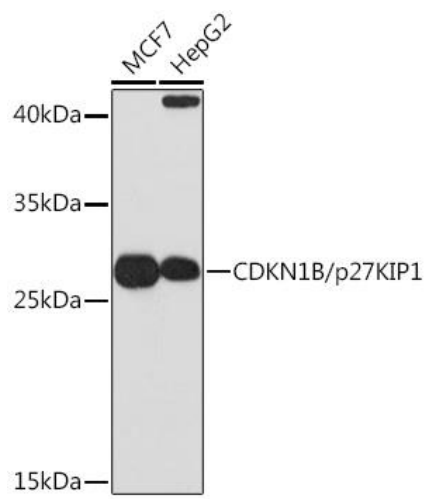
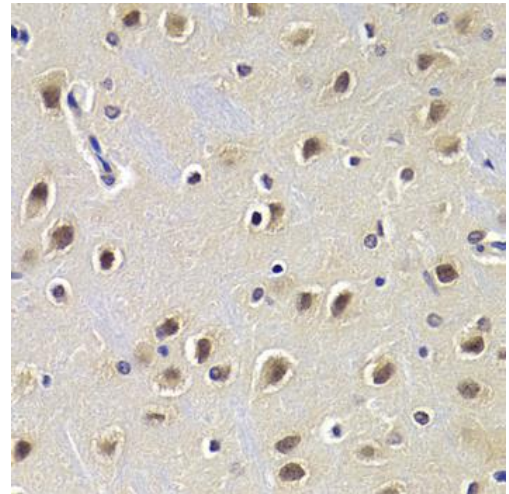

Product name:	CDKN1B
Cat number:	AB-82085
Conjugate:	Unconjugated
Size:	100 ug
Clone:	POLY
Concentration:	1mg/ml
Host:	Rabbit
Isotype:	IgG
Immunogen:	Recombinant fusion protein containing a sequence corresponding to amino acids 1-198 of human CDKN1B/p27KIP1 (NP_004055.1).
Reactivity:	Hu, Ms, Rt
Applications:	Western Blot: 1:500 - 1:2000 Immunohistochemistry: 1:50 - 1:200 Immunofluorescence: 1:20 - 1:50
Molecular Weight:	27kDa
Purification:	Aff. Pur.
Form:	Liquid
Buffer:	PBS with 0.02% sodium azide, 50% glycerol, pH7.3
Storage:	Store at -20°C. Avoid freeze / thaw cycles.
Background:	This gene encodes a cyclin-dependent kinase inhibitor, which shares a limited similarity with CDK inhibitor CDKN1A/p21. The encoded protein binds to and prevents the activation of cyclin E-CDK2 or cyclin D-CDK4 complexes, and thus controls the cell cycle progression at G1. The degradation of this protein, which is triggered by its CDK dependent phosphorylation and subsequent ubiquitination by SCF complexes, is required for the cellular transition from quiescence to the proliferative state. Mutations in this gene are associated with multiple endocrine neoplasia type IV (MEN4).



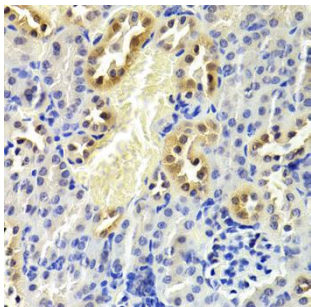
Western blot analysis of extracts from normal (control) and CDKN1B/p27KIP1 knockout (KO) HeLa cells, using CDKN1B/p27KIP1 antibody at 1:1000 dilution. Secondary antibody: HRP Goat Anti-Rabbit IgG (H+L) at 1:10000 dilution. Lysates/proteins: 25ug per lane. Blocking buffer: 3% nonfat dry milk in TBST. Detection: ECL West Pico Plus. Exposure time: 3min.



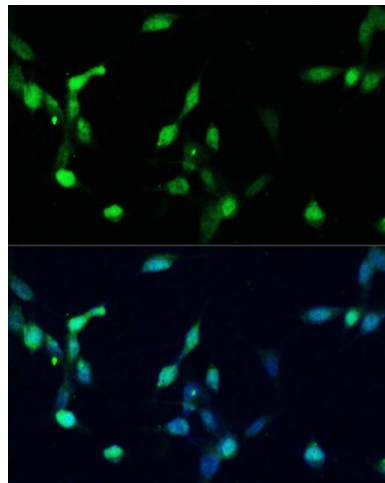
Western blot analysis of extracts of various cell lines, using CDKN1B/p27KIP1 Rabbit pAb at 1:1000 dilution. Secondary antibody: HRP Goat Anti-Rabbit IgG (H+L) at 1:10000 dilution. Lysates/proteins: 25ug per lane. Blocking buffer: 3% nonfat dry milk in TBST. Detection: ECL West Pico Plus. Exposure time: 3min.



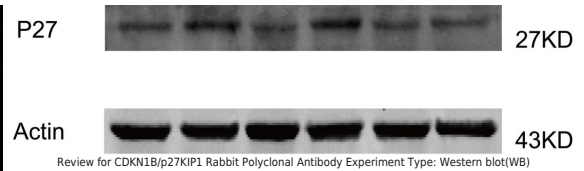
Immunohistochemistry of paraffin embedded rat brain using CDKN1B/p27KIP1 Antibody at dilution of 1:200 (40x lens).



Immunohistochemistry of paraffin embedded mouse kidney using CDKN1B/p27KIP1 Antibody at dilution of 1:200 (40x lens).



Immunofluorescence analysis of NIH/3T3 cells using p27 KIP 1 antibody at dilution of 1:100. Blue: DAPI for nuclear staining.



Review for CDKN1B/p27KIP1 Rabbit Polyclonal Antibody Experiment Type: Western blot(WB)