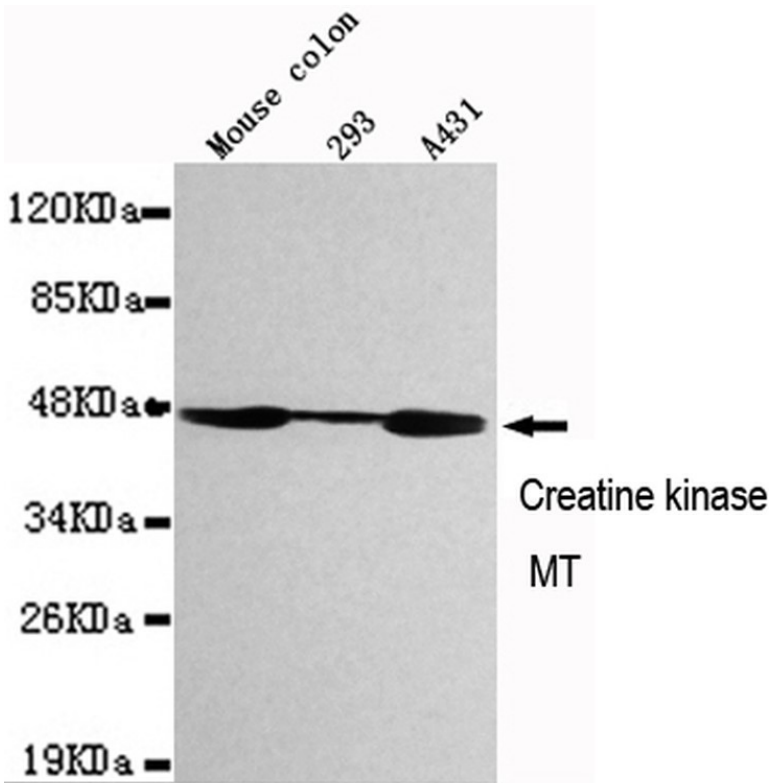


<b>Product name:</b>	CKMT1 / Creatine kinase MT
<b>Cat number:</b>	MAB-94652
<b>Conjugate:</b>	Unconjugated
<b>Size:</b>	100 ug
<b>Clone:</b>	1A6-C7-G10
<b>Concentration:</b>	1mg/ml
<b>Host:</b>	Ms
<b>Isotype:</b>	IgG
<b>Immunogen:</b>	Purified recombinant human CKMT1 protein fragments expressed in E.coli.
<b>Reactivity:</b>	Hu, Ms
<b>Applications:</b>	WB: 1:1000
<b>Molecular Weight:</b>	47kDa
<b>Purification:</b>	Aff. Pur.
<b>Form:</b>	Liquid
<b>Buffer:</b>	Liquid in PBS containing 50% glycerol, 0.5% BSA and 0.02% sodium azide.
<b>Storage:</b>	Store at -20°C, and avoid repeat freeze-thaw cycles.



Western blot detection of CKMT1 in Mouse Colon, 293 and A431 cell lysates using CKMT1 mouse mAb (1:1000 diluted). Predicted band size:47kDa. Observed band size:47kDa.