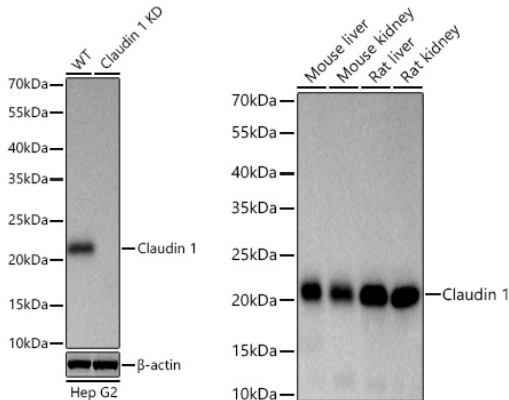
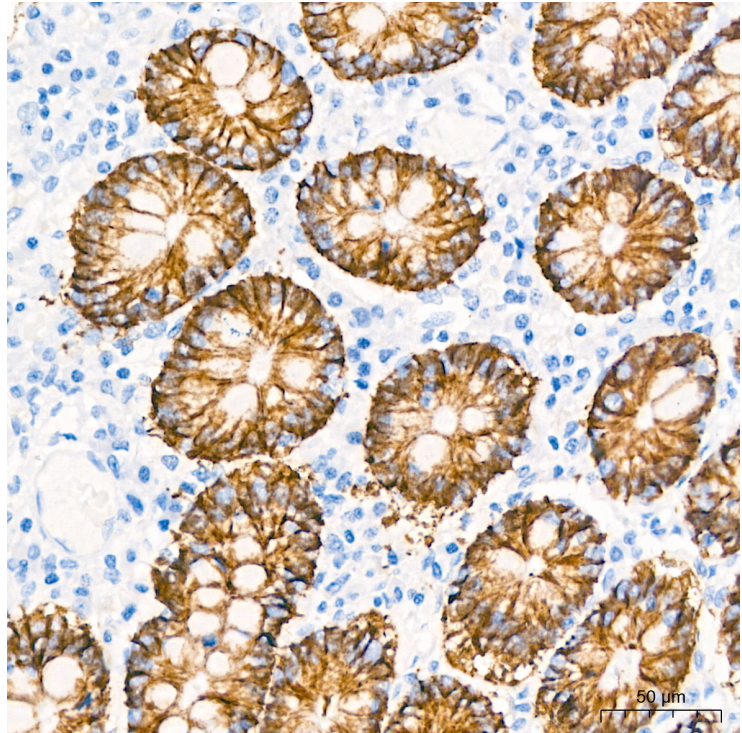

Product name:	Claudin 1 Rabbit Monoclonal Antibody
Cat number:	MAB25902
Conjugate:	Unconjugated
Size:	100 ug
Clone:	ARC3289
Concentration:	1mg/ml
Host:	Rabbit
Isotype:	IgG
Immunogen:	Synthetic peptide. This information is considered to be commercially sensitive.
Reactivity:	Human, Mouse, Rat
Applications:	WB 1:1000 - 1:5000 IP 0.5µg-4µg antibody for 200µg-400µg extracts of whole cells IF-P 1:50 - 1:200 IHC-P 1:50 - 1:200 ELISA Recommended starting concentration is 1 µg/mL. Please optimize the concentration based on your specific assay requirements.
Molecular Weight:	23kDa
Purification:	Affinity purification
Form:	liquid
Buffer:	PBS containing 50% glycerol and 0.05% BSA, preserved with proclin300 or sodium azide (as specified on the Certificate of Analysis), pH 7.3.
Storage:	Store at -20°C. Avoid freeze / thaw cycles.
Background:	Tight junctions represent one mode of cell-to-cell adhesion in epithelial or endothelial cell sheets, forming continuous seals around cells and serving as a physical barrier to prevent solutes and water from passing freely through the paracellular space. These junctions are comprised of sets of continuous networking strands in the outwardly facing cytoplasmic leaflet, with complementary grooves in the inwardly facing extracytoplasmic leaflet. The protein encoded by this gene, a member of the claudin family, is an integral membrane protein and a component of tight junction strands. Loss of function mutations result in neonatal ichthyosis-sclerosing cholangitis syndrome.



Western blot analysis of lysates from wild type (WT) and Claudin 1 knockdown (KD) Hep G2 cells using Claudin 1 Rabbit mAb at 1:1000 dilution incubated overnight at 4°C. Secondary antibody: HRP-conjugated Goat anti-Rabbit IgG (H+L) at 1:10000 dilution. Lysates/proteins: 25 µg per lane. Blocking buffer: 3% nonfat dry milk in TBST. Detection: ECL west Pico Plus. Exposure time: 1s.

Western blot analysis of lysates from A-431 cells using Claudin 1 Rabbit mAb at 1:1000 dilution incubated overnight at 4°C. Secondary antibody: HRP-conjugated Goat anti-Rabbit IgG (H+L) at 1:10000 dilution. Lysates/proteins: 25 µg per lane. Blocking buffer: 3% nonfat dry milk in TBST. Detection: ECL West Pico Plus. Exposure time: 1s.



Immunohistochemistry analysis of paraffin-embedded Human colon tissue using Claudin 1 Rabbit mAb at a dilution of 1:100 (40x lens). High pressure antigen retrieval performed with 0.01M Tris-EDTA Buffer(pH 9.0) prior to IHC staining.