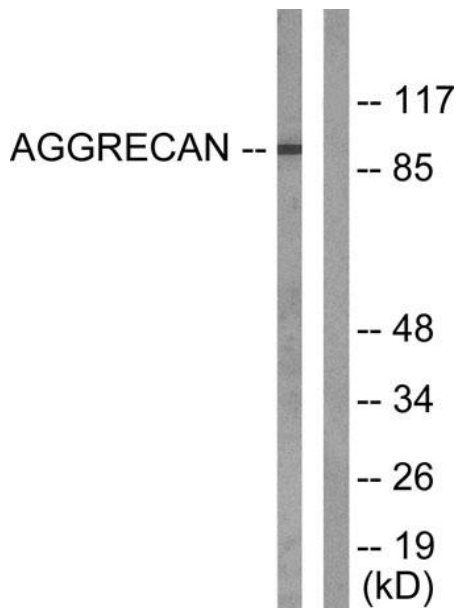
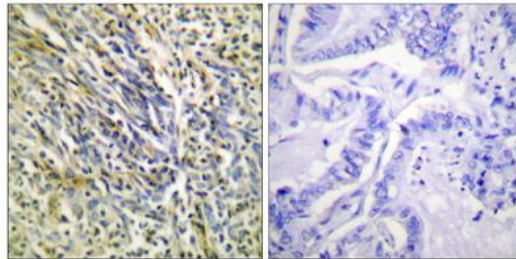


Product name:	Cleaved Aggrecan (D369) Rabbit Polyclonal Antibody
Cat number:	AB-84786
Conjugate:	Unconjugated
Size:	100 ug
Clone:	POLY
Concentration:	1mg/ml
Host:	Rabbit
Isotype:	IgG
Immunogen:	The antiserum was produced against synthesized peptide derived from human Aggrecan. AA range:320-369
Reactivity:	Human, Rat
Applications:	Western Blot: 1/500 - 1/2000 Immunohistochemistry: 1/100 - 1/300
Molecular Weight:	44kD
Purification:	The antibody was affinity-purified from rabbit antiserum by affinity-chromatography using epitope-specific immunogen.
Form:	Liquid
Buffer:	Liquid in PBS containing 50% glycerol, 0.5% BSA and 0.02% sodium azide.
Storage:	Store at -20°C. Avoid repeated freeze-thaw cycles.
Background:	This gene is a member of the aggrecan/versican proteoglycan family. The encoded protein is an integral part of the extracellular matrix in cartilagenous tissue and it withstands compression in cartilage. Mutations in this gene may be involved in skeletal dysplasia and spinal degeneration. Multiple alternatively spliced transcript variants that encode different protein isoforms have been observed in this gene.



Western blot analysis of lysates from Jurkat cells, treated with Etoposide 25uM 60', using Aggrecan (Cleaved-Asp369) Antibody. The lane on the right is blocked with the synthesized peptide.



Immunohistochemistry analysis of paraffin-embedded human lung carcinoma tissue, using Aggrecan (Cleaved-Asp369) Antibody. The picture on the right is blocked with the synthesized peptide.