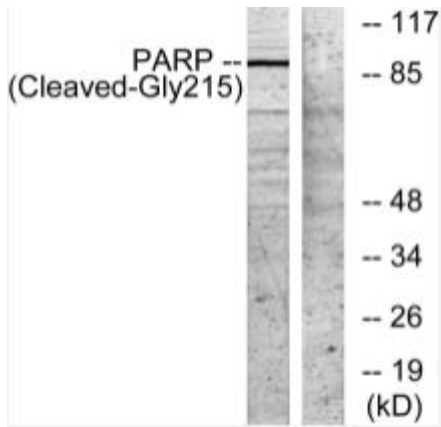

Product name:	Cleaved-PARP-1 (G215) Rabbit Polyclonal Antibody
Cat number:	AB-84746
Conjugate:	Unconjugated
Size:	100 ug
Clone:	POLY
Concentration:	1mg/ml
Host:	Rabbit
Isotype:	IgG
Immunogen:	The antiserum was produced against synthesized peptide derived from human PARP. AA range:196-245
Reactivity:	Human; Mouse; Rat
Applications:	Western Blot : 1/500 - 1/2000.
Molecular Weight:	89 kDa
Purification:	The antibody was affinity- purified from rabbit antiserum by affinity- chromatography using epitope- specific immunogen.
Form:	Liquid
Buffer:	Liquid in PBS containing 50% glycerol, 0.5% BSA and 0.02% sodium azide.
Storage:	Store at -20°C. Avoid repeated freeze-thaw cycles.
Background:	poly(ADP-ribose) polymerase 1(PARP1) Homo sapiens This gene encodes a chromatin-associated enzyme, poly(ADP- ribosyl) transferase, which modifies various nuclear proteins by poly(ADP-ribosyl)ation. The modification is dependent on DNA and is involved in the regulation of various important cellular processes such as differentiation proliferation, and tumor transformation and also in the regulation of the molecular events involved in the recovery of cell from DNA damage. In addition, this enzyme may be the site of mutation in Fanconi anemia, and may participate in the pathophysiology of type I diabetes.



Western blot analysis of lysates from NIH/3T3 cells, treated with etoposide 25uM 1h, using PARP (Cleaved-Gly215) Antibody. The lane on the right is blocked with the synthesized peptide.