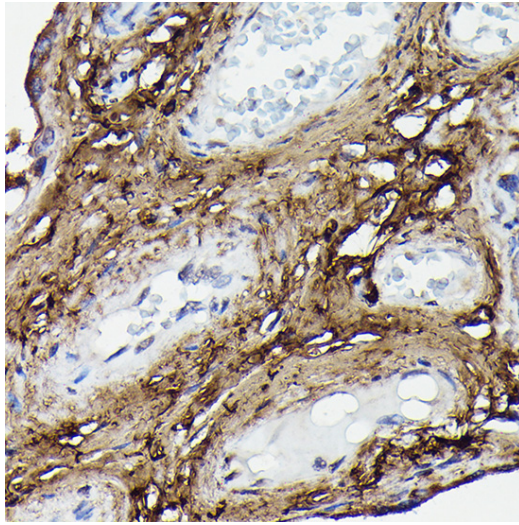
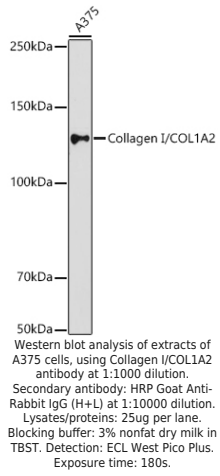
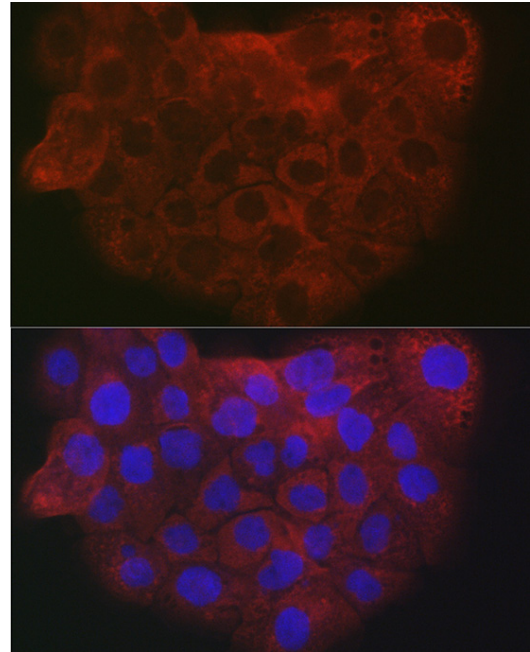
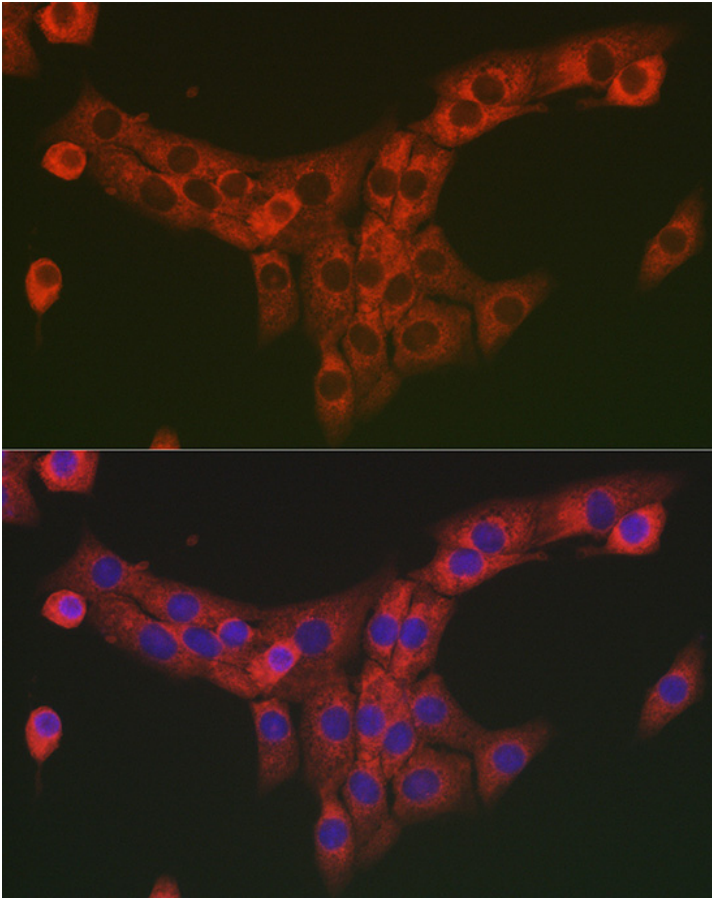

Product name:	Collagen I / COL1A2 Rabbit Polyclonal Antibody
Cat number:	AB-84752
Conjugate:	Unconjugated
Size:	100 ug
Clone:	POLY
Concentration:	1mg/ml
Host:	Rabbit
Isotype:	IgG
Immunogen:	A synthetic peptide corresponding to a sequence within amino acids 500-600 of human Collagen I/COL1A2.
Reactivity:	Human, Mouse, Rat
Applications:	Western Blot: 1:500 - 1:1000 Immunohistochemistry (paraffin embedded tissues): 1:50 - 1:200 Immunofluorescence: 1:25 - 1:200 Immunocytochemistry: 1:25 - 1:200
Molecular Weight:	129KDa
Purification:	Affinity purification
Form:	Liquid
Buffer:	PBS with 0.05% proclin300,50% glycerol,pH7.3.
Storage:	Store at -20°C. Avoid freeze / thaw cycles.
Background:	<p>This gene encodes the pro-alpha2 chain of type I collagen whose triple helix comprises two alpha1 chains and one alpha2 chain. Type I is a fibril-forming collagen found in most connective tissues and is abundant in bone, cornea, dermis and tendon. Mutations in this gene are associated with osteogenesis imperfecta types I-IV, Ehlers-Danlos syndrome type VIIB, recessive Ehlers-Danlos syndrome Classical type, idiopathic osteoporosis, and atypical Marfan syndrome. Symptoms associated with mutations in this gene, however, tend to be less severe than mutations in the gene for the alpha1 chain of type I collagen (COL1A1) reflecting the different role of alpha2 chains in matrix integrity. Three transcripts, resulting from the use of alternate polyadenylation signals, have been identified for this gene.</p>



Immunohistochemistry of paraffinembedded human placenta using Collagen I/COL1A2 Rabbit pAb at dilution of 1:100 (40x lens). Perform high pressure antigen retrieval with 10 mM citrate buffer pH 6.0 before commencing with IHC staining protocol.



Immunofluorescence analysis of A-431 cells using Collagen I/COL1A2 antibody at dilution of 1:25. Blue: DAPI for nuclear staining.



Immunofluorescence analysis of NIH/3T3 cells using Collagen I/COL1A2 antibody at dilution of 1:25. Blue: DAPI for nuclear staining.