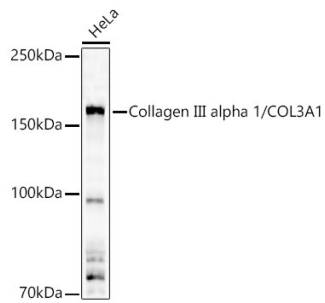
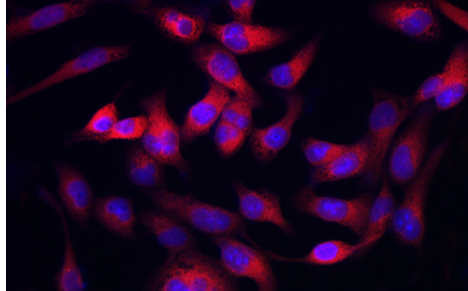
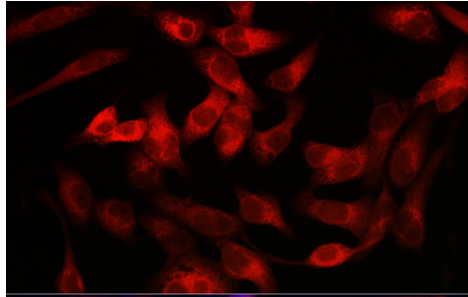


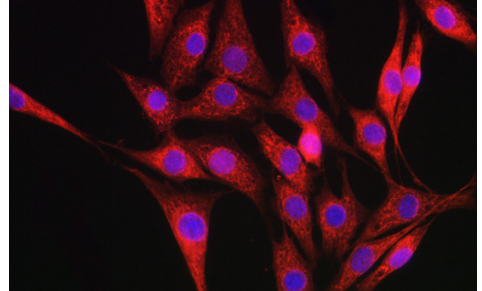
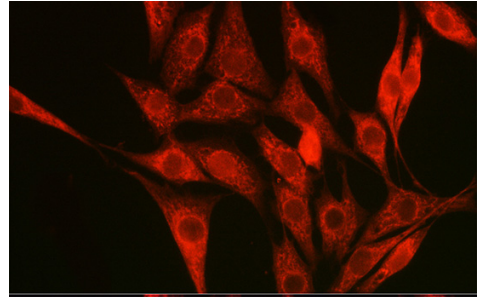
Product name:	Collagen III alpha 1/COL3A1 Rabbit Polyclonal Antibody
Cat number:	AB-82620
Conjugate:	Unconjugated
Size:	100 ug
Clone:	POLY
Concentration:	1mg/ml
Host:	Rabbit
Isotype:	IgG
Immunogen:	Recombinant fusion protein containing a sequence corresponding to amino acids 1201-1301 of human Collagen III alpha 1/COL3A1.
Reactivity:	Hu , Ms
Applications:	Western Blot: 1:2000 - 1:10000 Immunofluorescence: 1:50 - 1:200 Immunocytochemistry. 1:50 - 1:200
Molecular Weight:	150kDa
Purification:	Affinity purification
Form:	Liquid
Buffer:	PBS with 0.02% sodium azide,50% glycerol,pH7.3.
Storage:	Store at -20°C. Avoid freeze / thaw cycles.
Background:	This gene encodes the pro-alpha1 chains of type III collagen, a fibrillar collagen that is found in extensible connective tissues such as skin, lung, uterus, intestine and the vascular system, frequently in association with type I collagen. Mutations in this gene are associated with Ehlers-Danlos syndrome type IV, and with aortic and arterial aneurysms.



Western blot analysis of lysates from HeLa cells using Collagen III alpha 1/COL3A1 Rabbit pAb at 1:10000 dilution. Secondary antibody:HRP Goat Anti-Rabbit IgG (H+L) at 1:10000 dilution. Lysates/proteins: 25 µg per lane. Blocking buffer: 3% nonfat dry milk in TBST. Detection:ECL West Pico Plus. Exposure time:90s.



Immunofluorescence analysis of RD cells using Collagen III alpha 1/COL3A1 Rabbit pAb at dilution of 1:100. Secondary antibody: Cy3 Goat Anti-Rabbit IgG (H+L) (A5007) at 1:500 dilution. Blue: DAPI for nuclear staining.



Immunofluorescence analysis of NIH/3T3 cells using Collagen III alpha 1/COL3A1 Rabbit pAb at dilution of 1:100. Secondary antibody: Cy3 Goat Anti-Rabbit IgG (H+L) at 1:500 dilution. Blue: DAPI for nuclear staining.