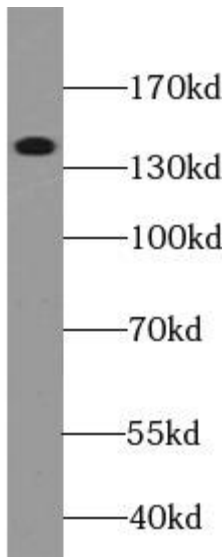
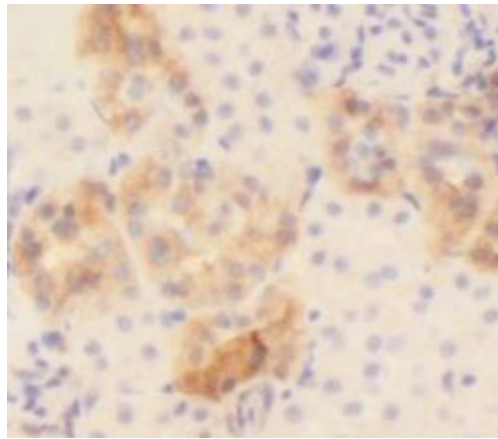


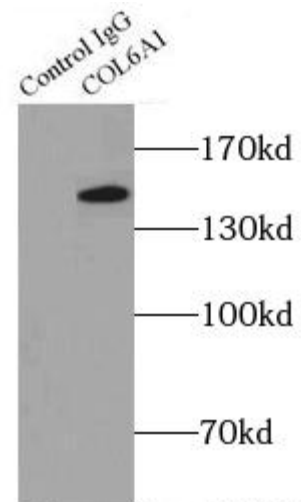
Product name:	Collagen Type VI Rabbit Polyclonal Antibody
Cat number:	AB-84738
Conjugate:	Unconjugated
Size:	100 ug
Clone:	POLY
Concentration:	1mg/ml
Host:	Rabbit
Isotype:	IgG
Immunogen:	collagen, type VI, alpha 1
Reactivity:	Human, Mouse, Rat
Applications:	Western Blot: 1:500-1:1000 Immunoprecipitation: 1:500-1:1000 Immunohistochemistry:1:50-1:200 Immunofluorescence: 1:20-1:200
Molecular Weight:	140 kDa
Purification:	Immunogen affinity purified
Form:	Liquid
Buffer:	PBS with 0.02% sodium azide and 50% glycerol pH 7.3.
Storage:	Store at -20°C for 12 months (Avoid repeated freeze / thaw cycles.)
Background:	Type VI Collagen is a major structural component of microfibrils. Type VI Collagen was found to be present throughout the connective tissue and in the extracellular matrix of cultured fibroblasts(PMID: 6723253). It is a heterotrimer composed of three different chains: alpha-1(VI), alpha-2(VI), and alpha-3(VI) or alpha-5(VI) or alpha-6(VI). The alpha-1(VI) chain is encoded by COL6A1 gene. Mutations in this gene result in Bethlem myopathy and Ullrich congenital muscular dystrophy.



human heart tissue were subjected to SDS PAGE followed by western blot with COL6A1 Antibody at dilution of 1:600



Immunohistochemistry of paraffin-embedded human kidney using COL6A1 antibody at dilution of 1:100



+ - Normal Rabbit IgG
- + COL6A1 Antibody

IP Result of anti-Collagen Type VI (IP: 4ug; Detection: 1:500) with mouse heart tissue lysate 8000ug.