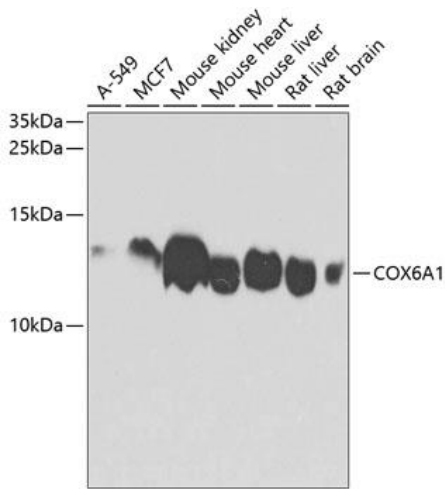
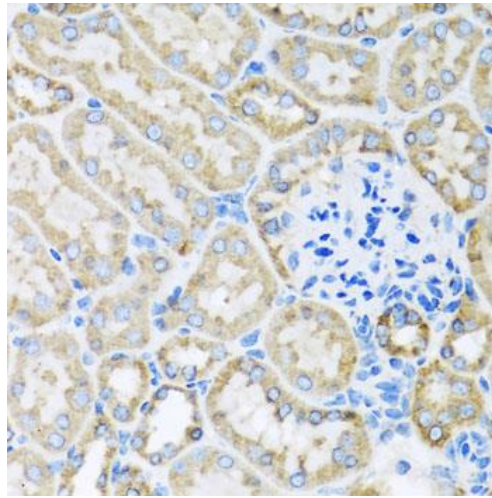

Product name:	COX6A1
Cat number:	AB-83898
Size:	100 ug
Clone:	poly
Concentration:	1mg/ml
Host:	RB
Isotype:	IgG
Immunogen:	Recombinant fusion protein containing a sequence corresponding to amino acids 25-109 of human COX6A1.
Reactivity:	Hu, Ms, Rt
Applications:	Western Blot: 1:200 -1:1000 Immunohistochemistry: 1:20 -1:100
Molecular Weight:	12kDa
Purification:	Aff.Pur.
Form:	Liquid
Buffer:	PBS with 0.02% sodium azide, 50%glycerol, pH7.3.
Storage:	Store at -20°C. Avoid freeze/thaw cycles
Background:	<p>Cytochrome c oxidase (COX), the terminal enzyme of the mitochondrial respiratory chain, catalyzes the electron transfer from reduced cytochrome c to oxygen. It is a heteromeric complex consisting of 3 catalytic subunits encoded by mitochondrial genes and multiple structural subunits encoded by nuclear genes. The mitochondrially-encoded subunits function in the electron transfer and the nuclear-encoded subunits may function in the regulation and assembly of the complex. This nuclear gene encodes polypeptide 1 (liver isoform) of subunit VIa, and polypeptide 1 is found in all non-muscle tissues. Polypeptide 2 (heart/muscle isoform) of subunit VIa is encoded by a different gene, and is present only in striated muscles. These two polypeptides share 66% amino acid sequence identity. It has been reported that there may be several pseudogenes on chromosomes 1, 6, 7q21, 7q31-32 and 12. However, only one pseudogene (COX6A1P) on chromosome 1p31.1 has been documented.</p>



Western blot analysis of extracts of various cell lines, using COX6A1 antibody at 1:1000 dilution. Secondary antibody: HRP Goat Anti-Rabbit IgG (H+L) at 1:10000 dilution. Lysates/proteins: 25ug per lane. Blocking buffer: 3% nonfat dry milk in TBST. Detection: ECL West Pico Exposure time: 60s.



Immunohistochemistry of paraffin-embedded mouse kidney using COX6A1 antibody at dilution of 1:100 (40x lens).