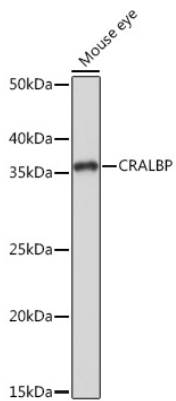
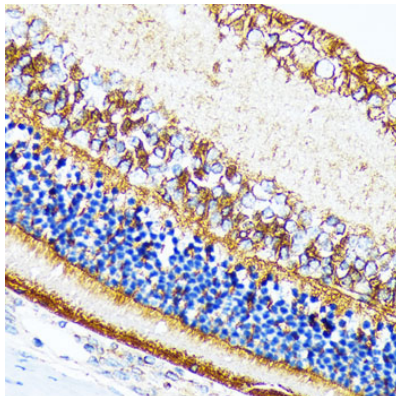
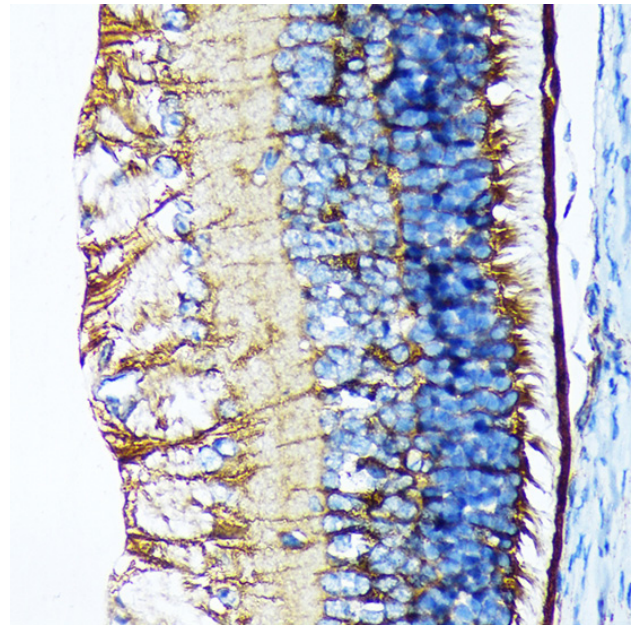

| | |
|--------------------------|---|
| Product name: | CRALBP Rabbit Monoclonal Antibody |
| Cat number: | MAB-94793 |
| Conjugate: | Unconjugated |
| Size: | 100 ug |
| Clone: | ARC1502 |
| Concentration: | 1mg/ml |
| Host: | Rabbit |
| Isotype: | IgG |
| Immunogen: | A synthetic peptide corresponding to a sequence within amino acids 1-100 of human CRALBP |
| Reactivity: | Human, Mouse, Rat |
| Applications: | Western Blot: 1:500 - 1:2000 Immunohistochemistry(paraffin-embedded tissues): 1:50 - 1:200 Immunofluorescence: 1:50 - 1:200 Immunocytochemistry: 1:50 - 1:200 |
| Molecular Weight: | 36kDa |
| Purification: | Affinity purification |
| Form: | Liquid |
| Buffer: | 36kDa |
| Storage: | Store at -20°C. Avoid repeated freeze-thaw cycles. |
| Background: | The protein encoded by this gene is a 36-kD water-soluble protein which carries 11-cisretinaldehyde or 11-cis-retinal as physiologic ligands. It may be a functional component of the visual cycle. Mutations of this gene have been associated with severe rod-cone dystrophy, Bothnia dystrophy (nonsyndromic autosomal recessive retinitis pigmentosa) and retinitis punctata albescens. |



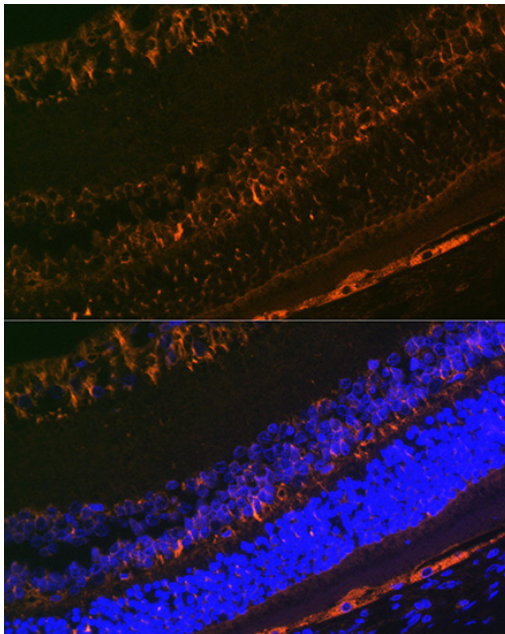
Western blot analysis of extracts of Mouse eye, using CRALBP Rabbit mAb at 1:1000 dilution. Secondary antibody: HRP Goat Anti-Rabbit IgG (H+L) at 1:10000 dilution. Lysates/proteins: 25µg per lane. Blocking buffer: 3% nonfat dry milk in TBST. Detection: ECL West Pico Plus. Exposure time: 1s.



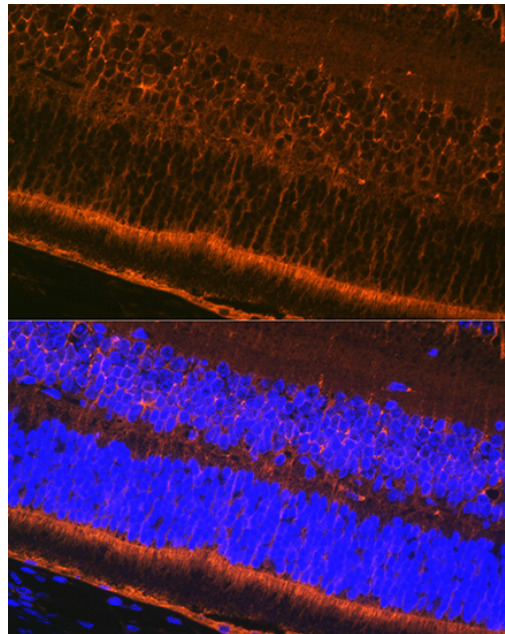
Immunohistochemistry analysis of paraffin-embedded rat retina using CRALBP Rabbit mAb at dilution of 1:100 (40x lens). Perform microwave antigen retrieval with 10 mM Tris/EDTA buffer pH 9.0 before commencing with IHC staining protocol.



Immunohistochemistry analysis of paraffin-embedded mouse retina using CRALBP Rabbit mAb at dilution of 1:100 (40x lens). Perform microwave antigen retrieval with 10 mM Tris/EDTA buffer pH 9.0 before commencing with IHC staining protocol.



Immunofluorescence analysis of rat eye using CRALBP Rabbit mAb at dilution of 1:100 (40x lens). Blue: DAPI for nuclear staining.



Immunofluorescence analysis of mouse eye using CRALBP Rabbit mAb at dilution of 1:100 (40x lens). Blue: DAPI for nuclear staining.