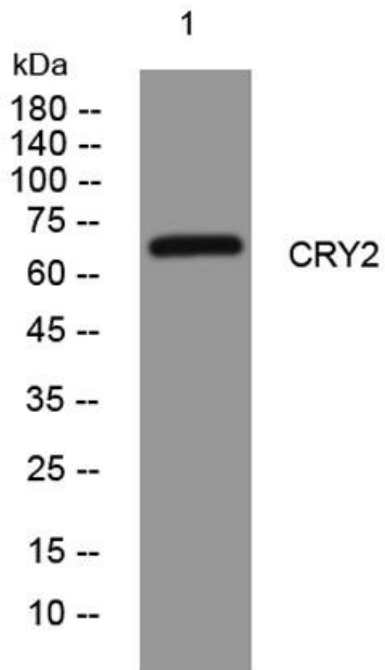


Product name:	CRY2 Rabbit Polyclonal Antibody
Cat number:	AB-E12250
Conjugate:	unconjugated
Size:	100 ug
Clone:	Polyclonal
Concentration:	1mg/ml
Host:	Rabbit
Isotype:	IgG
Immunogen:	Synthesized peptide derived from human CRY2 protein . at AA range: 181-231
Reactivity:	Human, Mouse, Rat
Applications:	Western Blot 1:500- 1:2000
Molecular Weight:	64kd
Purification:	affinity purified
Form:	Liquid
Buffer:	PBS containing 50% glycerol, 0.5% BSA and 0.02% sodium azide
Storage:	Store at -20°C. Avoid repeated freeze-thaw cycles.
Background:	This gene encodes a flavin adenine dinucleotide-binding protein that is a key component of the circadian core oscillator complex, which regulates the circadian clock. This gene is upregulated by CLOCK/ARNTL heterodimers but then represses this upregulation in a feedback loop using PER/CRY heterodimers to interact with CLOCK/ARNTL. Polymorphisms in this gene have been associated with altered sleep patterns. The encoded protein is widely conserved across plants and animals.



Western blot analysis of lysates from U2OS cells, primary antibody was diluted at 1:1000, 4° over night