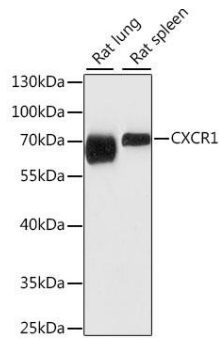
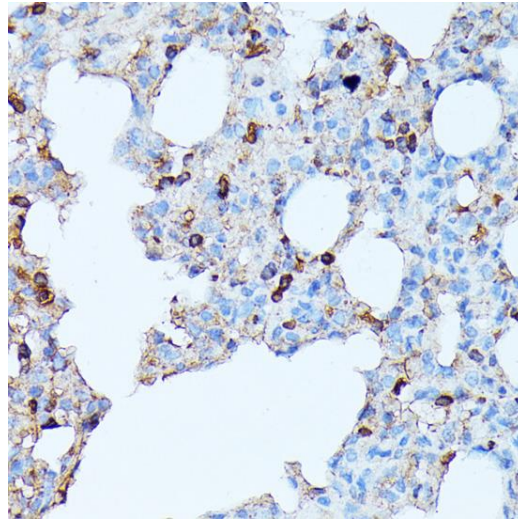
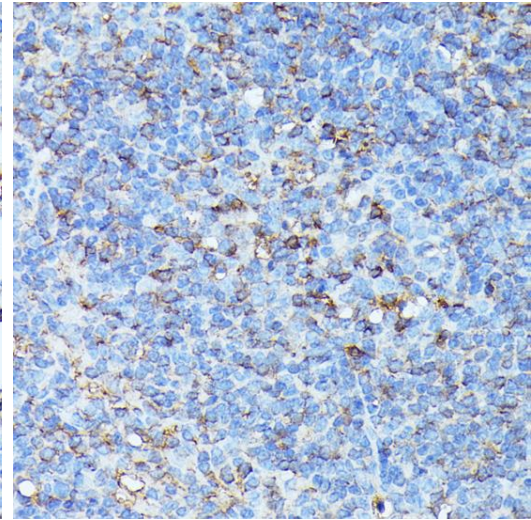

Product name:	CXCR1
Cat number:	AB-82066
Conjugate:	Unconjugated
Size:	100 µg
Clone:	POLY
Concentration:	1mg/ml
Host:	Rb
Isotype:	IgG
Immunogen:	A synthetic peptide corresponding to a sequence within amino acids 250-350 of human CXCR1.
Reactivity:	Hu
Applications:	Western Blot: 1:500 - 1:2000 Immunohistochemistry: 1:50 - 1:200
Molecular Weight:	70kDa
Purification:	Aff.Pur.
Form:	Liquid
Buffer:	PBS with 0.02% sodium azide,50% glycerol,pH7.3.
Storage:	Store at -20°C. Avoid freeze / thaw cycles.
Background:	The protein encoded by this gene is a member of the G-protein-coupled receptor family. This protein is a receptor for interleukin 8 (IL8). It binds to IL8 with high affinity, and transduces the signal through a G-protein activated second messenger system. Knockout studies in mice suggested that this protein inhibits embryonic oligodendrocyte precursor migration in developing spinal cord. This gene, IL8RB, a gene encoding another high affinity IL8 receptor, as well as IL8RBP, a pseudogene of IL8RB, form a gene cluster in a region mapped to chromosome 2q33-q36



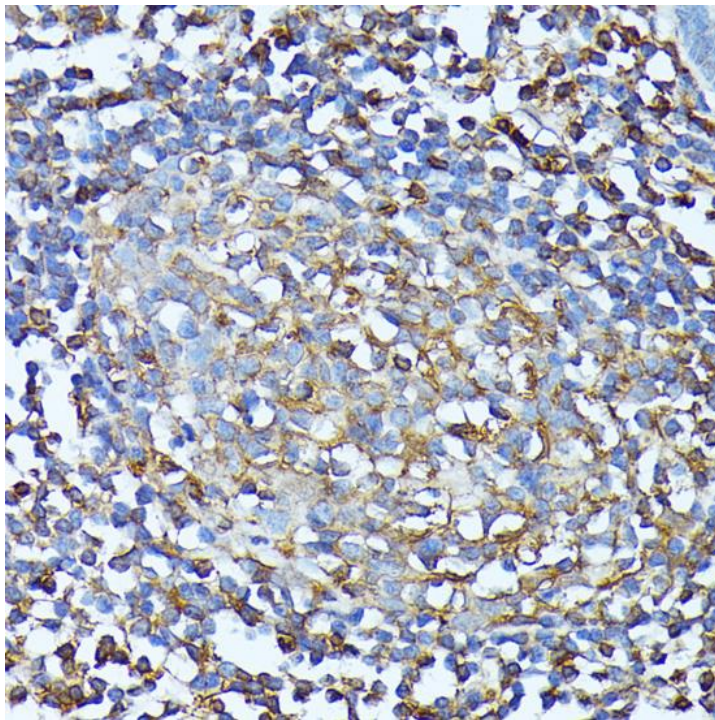
Western blot analysis of extracts of various cell lines, using CXCR1 antibody at 1:1000 dilution.
Secondary antibody: HRP Goat Anti-Rabbit IgG (H+L) at 1:10000 dilution.
Lysates/proteins: 25ug per lane.
Blocking buffer: 3% nonfat dry milk in TBST. Detection: ECL West Pico Plus.
Exposure time: 15s.



Immunohistochemistry of paraffin embedded rat lung using CXCR1 antibody at dilution of 1:100 (40x lens).



Immunohistochemistry of paraffin embedded mouse spleen using CXCR1 antibody at dilution of 1:100 (40x lens).



Immunohistochemistry of paraffin embedded human colon using CXCR1 antibody at dilution of 1:100 (40x lens).