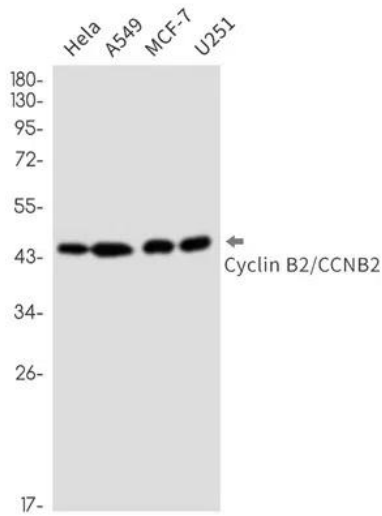
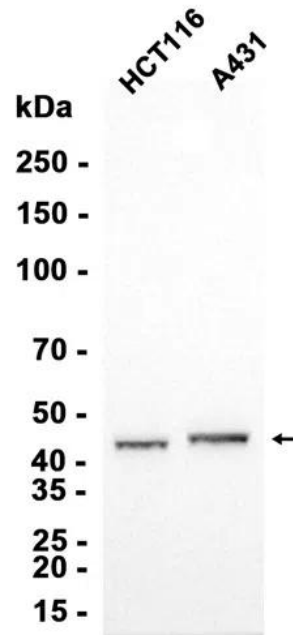

Product name:	Cyclin B2 Rabbit Monoclonal Antibody
Cat number:	MABN87634
Conjugate:	Unconjugated
Size:	100µL
Concentration:	1mg/ml
Host:	Rabbit
Isotype:	IgG
Immunogen:	Recombinant protein of human Cyclin B2/CCNB2
Reactivity:	Human, Mouse, Rat
Applications:	WB 1:500-1:2000, IHC 1:50-1:200, ICC/IF 1:200-1:500, IP 1:50-1:100
Molecular Weight:	45 kDa
Purification:	Affinity purification
Form:	liquid
Buffer:	Supplied in 50mM Tris-Glycine(pH 7.4), 0.15M NaCl, 40% Glycerol, 0.01% sodium azide and 0.05% protective protein. Stable for 12 months from date of receipt.
Storage:	Store at 4°C short term. Aliquot and store at -20°C long term. Avoid freeze/thaw cycles.
Background:	Cyclin B2 is a member of the cyclin family, specifically the B-type cyclins. The B-type cyclins, B1 and B2, associate with p34cdc2 and are essential components of the cell cycle regulatory machinery. B1 and B2 differ in their subcellular localization. Cyclin B1 co-localizes with microtubules, whereas cyclin B2 is primarily associated with the Golgi region. Cyclin B2 also binds to transforming growth factor beta RII and thus cyclin B2/cdc2 may play a key role in transforming growth factor beta-mediated cell cycle control. [provided by RefSeq, Jul 2008]



Western blot detection of Cyclin B2/CCNB2 in HeLa, A549, MCF-7, U251 cell lysates using Cyclin B2/CCNB2 antibody (1:1000 diluted).



Western blot analysis of extracts from HCT116 and A431 cells using AMRe87634 at 1:1000.