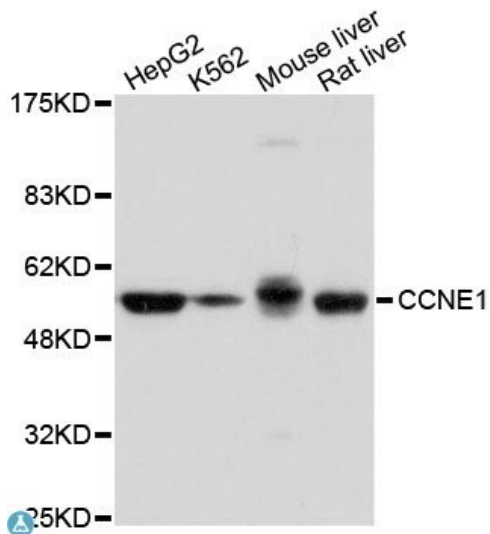
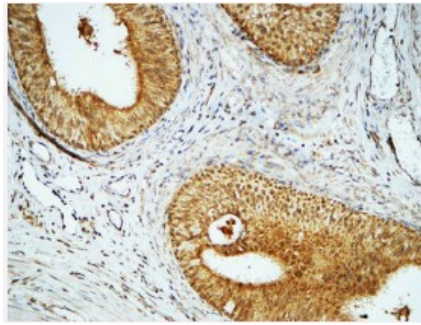


---

<b>Product name:</b>	Cyclin E
<b>Cat number:</b>	AB-84204
<b>Size:</b>	100ug
<b>Clone:</b>	POLY
<b>Concentration:</b>	1mg/ml
<b>Host:</b>	Rb
<b>Isotype:</b>	IgG
<b>Immunogen:</b>	Synthesized peptide derived from human Cyclin E1.
<b>Reactivity:</b>	Hu, Ms ,Rt
<b>Applications:</b>	Western Blot: 1:500-1:2000 Immunohistochemistry: 1:100-1:300 Immunofluorescence: 1:200-1:1000 ELISA: 1:20000
<b>Molecular Weight:</b>	47kDa
<b>Purification:</b>	The antibody was affinity-purified from rabbit antiserum by affinitychromatography using epitope-specific immunogen.
<b>Form:</b>	Liquid
<b>Buffer:</b>	Liquid in PBS containing 50% glycerol, 0.5% BSA and 0.02% sodium azide.
<b>Storage:</b>	Store at -20°C. Avoid freeze / thaw cycles.
<b>Background:</b>	Cyclin E1 is a protein encoded by the CCNE1 gene which is approximately 47 kDa. Cyclin E1 is localised to the nucleus. It is involved in cyclins and cell cycle regulation, DNA damage response and chaperonin-mediated protein folding. It belongs to the highly conserved cyclin family and function as a regulator of CDK kinases. Different cyclins exhibit distinct expression and degradation patterns which contribute to the temporal coordination of each mitotic event. This cyclin forms a complex with and functions as a regulatory subunit of CDK2, whose activity is required for cell cycle G1/S transition. Cyclin E1 is highly expressed in testis and placenta. Mutations in the CCNE1 gene may result in chronic endophthalmitis and facial dermatosis. AB-84204 was affinity-purified from rabbit antiserum by affinity-chromatography using epitope-specific immunogen. This polyclonal antibody detects endogenous levels of Cyclin E1 protein.



Western blot analysis of extracts of various cell lines, using Cyclin E antibody. Secondary antibody: HRP Goat Anti-Rabbit IgG (H+L) at 1:10000 dilution. Lysates/proteins: 25ug per lane. Blocking buffer: 3% nonfat dry milk in TBST.



Immunohistochemistry Analysis of Human Testis using Cyclin E antibody.