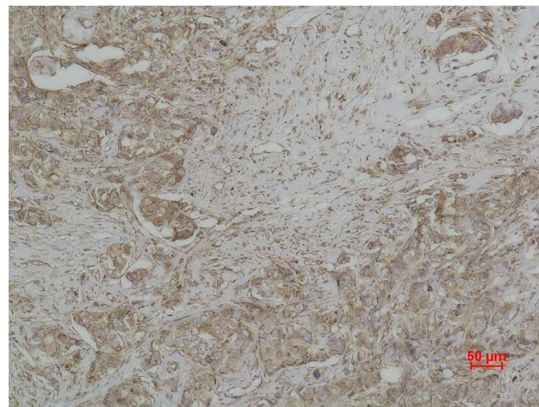
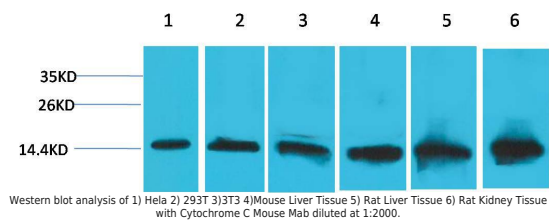


<b>Product name:</b>	Cytochrome C Mouse Monoclonal Antibody
<b>Cat number:</b>	MAB-94695
<b>Conjugate:</b>	Unconjugated
<b>Size:</b>	100 ug
<b>Clone:</b>	6H2.B4
<b>Concentration:</b>	1mg/ml
<b>Host:</b>	Ms
<b>Isotype:</b>	IgG1
<b>Immunogen:</b>	Recombinant protein containing a sequence of human Cytochrome C
<b>Reactivity:</b>	Hu, Ms, Rt
<b>Applications:</b>	WesternBlot: 1:000 Immunohistochemistry: 1:500
<b>Molecular Weight:</b>	14kDa
<b>Purification:</b>	Aff. Pur.
<b>Form:</b>	Liquid
<b>Buffer:</b>	PBS with 0.02% sodium azide and 50% glycerol pH 7.4.
<b>Storage:</b>	Store at -20°C. Avoid repeated freeze-thaw cycles.
<b>Background:</b>	The cytochrome complex or cyt c is a small hemeprotein found loosely associated with the inner membrane of the mitochondrion. It belongs to the cytochrome c family of proteins.



Immunohistochemical analysis of paraffin-embedded human Breast carcinoma using Cytochrome C Mouse Mab diluted at 1:500.