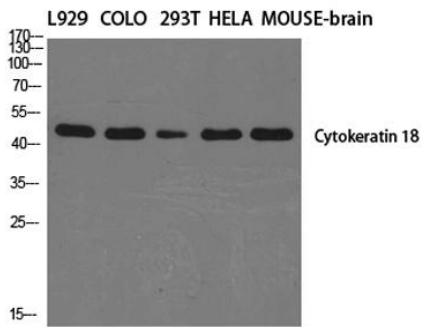
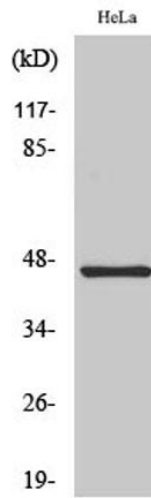


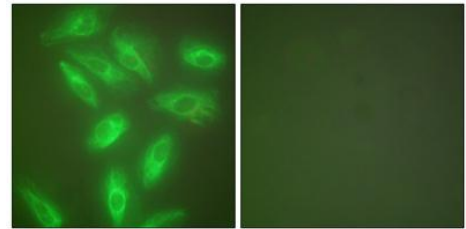
Product name:	Cytokeratin 18 Rabbit Polyclonal Antibody
Cat number:	AB-81877
Conjugate:	Unconjugated
Size:	101 ug
Clone:	POLY
Concentration:	1mg/ml
Host:	Rabbit
Isotype:	IgG
Immunogen:	The antiserum was produced against synthesized peptide derived from human Keratin 18. AA range:381-430
Reactivity:	Human;Mouse;Rat
Applications:	Western Blot: 1/500 - 1/2000 Immunohistochemistry: 1/100 - 1/300 Immunofluorescence: 1/200 - 1/1000
Molecular Weight:	46kD
Purification:	The antibody was affinity-purified from rabbit antiserum by affinity-chromatography using epitope-specific immunogen.
Form:	Liquid
Buffer:	Liquid in PBS containing 50% glycerol, 0.5% BSA and 0.02% sodium azide
Storage:	Store at -20°C. Avoid repeated freeze-thaw cycles.
Background:	KRT18 encodes the type I intermediate filament chain keratin 18. Keratin 18, together with its filament partner keratin 8, are perhaps the most commonly found members of the intermediate filament gene family. They are expressed in single layer epithelial tissues of the body. Mutations in this gene have been linked to cryptogenic cirrhosis. Two transcript variants encoding the same protein have been found for this gene.



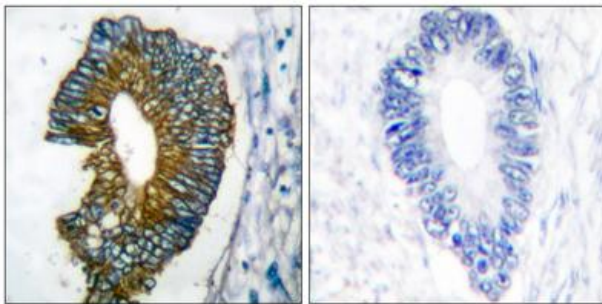
Western Blot analysis of various cells using Cytokeratin 18 Polyclonal Antibody diluted at 1:2000.



Western Blot analysis of HeLa cells using Cytokeratin 18 Polyclonal Antibody diluted at 1:2000.



Immunofluorescence analysis of HeLa cells, using Keratin 18 Antibody. The picture on the right is blocked with the synthesized peptide.



Immunohistochemistry analysis of paraffin-embedded human lung carcinoma tissue, using Keratin 18 Antibody. The picture on the right is blocked with the synthesized peptide.