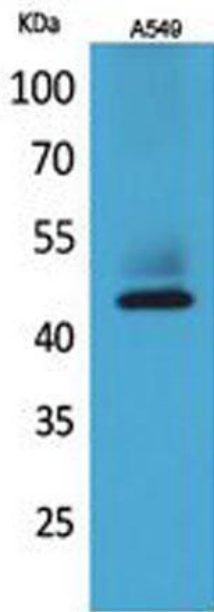
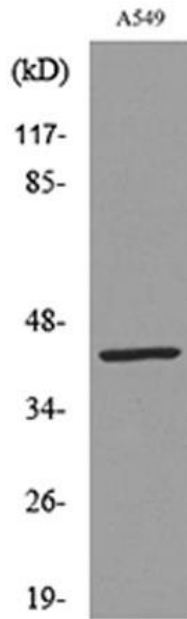


---

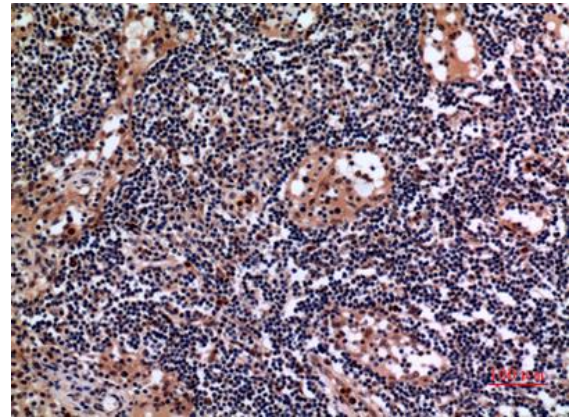
|                          |  |
|--------------------------|--|
| <b>Product name:</b>     | Cytokeratin 19 Rabbit Polyclonal Antibody  |
| <b>Cat number:</b>       | AB-80681   |
| <b>Conjugate:</b>        | Unconjugated   |
| <b>Size:</b>             | 100 ug   |
| <b>Clone:</b>            | POLY   |
| <b>Concentration:</b>    | 1mg/ml   |
| <b>Host:</b>             | Rabbit   |
| <b>Isotype:</b>          | IgG  |
| <b>Immunogen:</b>        | The antiserum was produced against synthesized peptide derived from the C-terminal region of human KRT19. AA range:321-370   |
| <b>Reactivity:</b>       | Human, Mouse, Rat  |
| <b>Applications:</b>     | Western Blot: 1/500 - 1/2000 Immunohistochemistry(paraffin-embedded tissues): HC-p: 1/100-1/300  |
| <b>Molecular Weight:</b> | 44kDa  |
| <b>Purification:</b>     | The antibody was affinity-purified from rabbit antiserum by affinity-chromatography using epitope-specific immunogen.  |
| <b>Form:</b>             | Liquid   |
| <b>Buffer:</b>           | Liquid in PBS containing 50% glycerol, 0.5% BSA and 0.02% sodium azide.  |
| <b>Storage:</b>          | Store at -20°C. Avoid repeated freeze-thaw cycles.   |
| <b>Background:</b>       | The protein encoded by this gene is a member of the keratin family. The keratins are intermediate filament proteins responsible for the structural integrity of epithelial cells and are subdivided into cytokeratins and hair keratins. The type I cytokeratins consist of acidic proteins which are arranged in pairs of heterotypic keratin chains. Unlike its related family members, this smallest known acidic cytokeratin is not paired with a basic cytokeratin in epithelial cells. It is specifically expressed in the periderm, the transiently superficial layer that envelopes the developing epidermis. The type I cytokeratins are clustered in a region of chromosome 17q12-q21. |



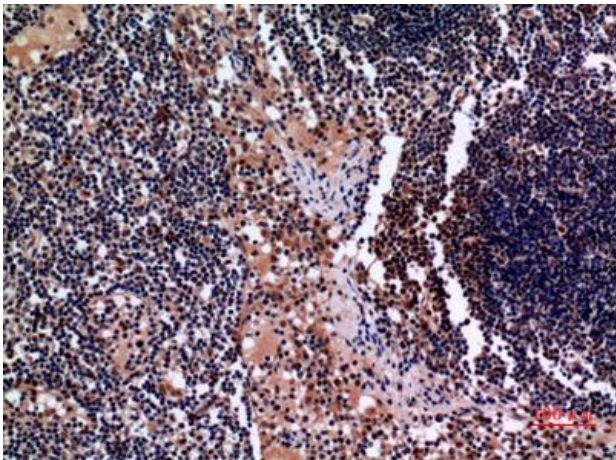
Western Blot analysis of A549 cells using Cytokeratin 19 Polyclonal Antibody. Secondary antibody was diluted at 1:20000



Western blot analysis of lysate from A549 cells, using KRT19 Antibody.



Immunohistochemical analysis of paraffin-embedded human-lymph-gland, antibody was diluted at 1:100



Immunohistochemical analysis of paraffin-embedded human-lymph-gland, antibody was diluted at 1:100