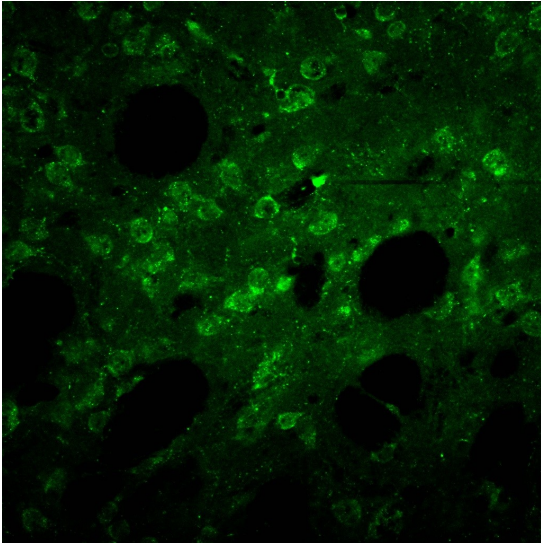
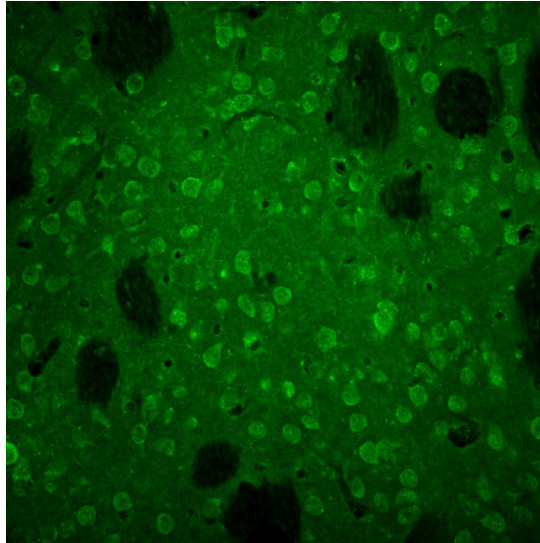

Product name:	Dopamine Receptor D2
Cat number:	AB-11173
Conjugate:	Unconjugated
Size:	100 ul
Clone:	POLY
Concentration:	1mg/ml
Host:	Rb
Isotype:	IgG
Reactivity:	Hu, Rt, Ms
Applications:	Elisa, Western Blot, Immunocytochemistry, Immunohistochemistry (frozen tissues) Immunocytochemistry: 1:5000 dilution (PLP fixed rat brain sections) Western Blot: whole rat brain homogenate resulted in a pair of bands being detected at ~48 and ~51 kD at 1:1000-1:10000 with ECL Detection process. In some cases, it is required a higher dilution. For IHC (F) & ICC it is important to fix the cells or tissues with the PLP fixative (Please see protocol below)
Purification:	Serum
Form:	Liquid
Background:	The antiserum was raised in a rabbit which was immunized with D2 (272-282) covalently attached onto a carrier protein, and it has been characterized by immunocytochemical, western immunoblot and ELISA techniques. The antiserum has been found to be highly specific for this peptide sequence and is suitable for immunocytochemical detection of both the short and the long forms of the D2 dopamine receptor. Rehydrate the antibody with 0.1 ml of PBS which contains 10 mg/ml BSA or with additional buffer (such as 10 mg/ml BSA in PBS) for more dilute antibody. 100% cross reactivity with D2 Dopamine Receptor (272-282), ~ 70% with D2S Dopamine Receptor, ~ 60% with D2L No cross reactivity with the other Dopamine Receptors.



Working Dilutions Primary Antibody: 1:300 Tests performed by Fusco F.R., Giampà C. Neuroanatomy Lab.
Fondazione S. Lucia, Roma



Working Dilutions Primary Antibody: 1:300 Tests performed by Fusco F.R., Giampà C. Neuroanatomy Lab.
Fondazione S. Lucia, Roma