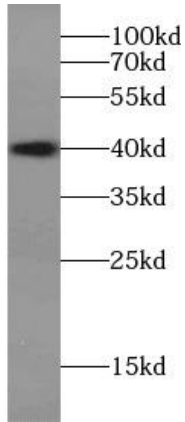
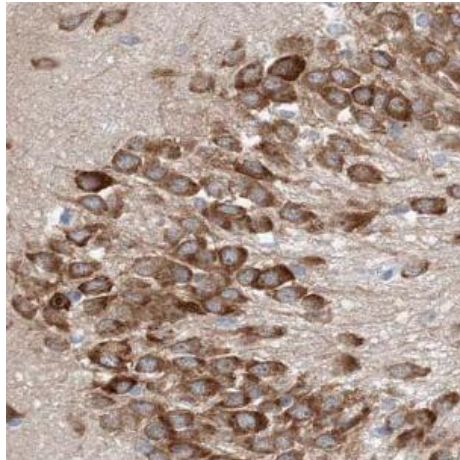


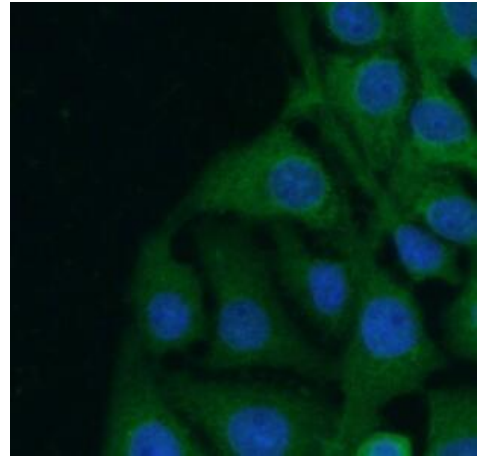
<b>Product name:</b>	Doublecortin Rabbit Polyclonal Antibody
<b>Cat number:</b>	AB-80651
<b>Conjugate:</b>	Unconjugated
<b>Size:</b>	100 ug
<b>Clone:</b>	POLY
<b>Concentration:</b>	1mg/ml
<b>Host:</b>	Rb
<b>Isotype:</b>	IgG
<b>Immunogen:</b>	doublecortin
<b>Reactivity:</b>	Hu, Ms, Rt
<b>Applications:</b>	Western Blot: 1:500-1:2000 Immunohistochemistry: 1:20-1:200 Immunofluorescence: 1:20-1:200
<b>Molecular Weight:</b>	40 kDa
<b>Purification:</b>	≥95% as determined by SDS-PAGE
<b>Form:</b>	Liquid
<b>Buffer:</b>	PBS with 0.02% sodium azide and 50% glycerol pH 7.3,
<b>Storage:</b>	Store -20°C for 12 months (Avoid repeated freeze / thaw cycles.)
<b>Background:</b>	Microtubule-associated protein required for initial steps of neuronal dispersion and cortex lamination during cerebral cortex development. May act by competing with the putative neuronal protein kinase DCLK1 in binding to a target protein. May in that way participate in a signaling pathway that is crucial for neuronal interaction before and during migration, possibly as part of a calcium ion-dependent signal transduction pathway. May be part with PFAH1B1/LIS-1 of overlapping, but distinct, signaling pathways that promote neuronal migration.



human brain tissue were subjected to SDS PAGE followed by western blot with DCX antibody at dilution of 1:600



Immunohistochemistry of paraffin-embedded human testis using DCX antibody at dilution of 1:100



Immunofluorescent analysis of SH-SY5Y cells using DCX antibody at dilution of 1:50 and Alexa Fluor 488-conjugated Goat Anti-Rabbit IgG(H+L)