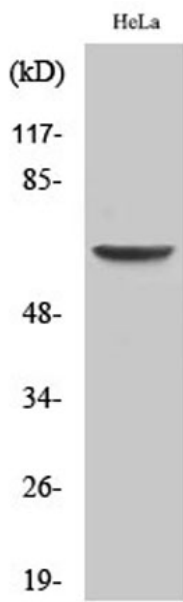
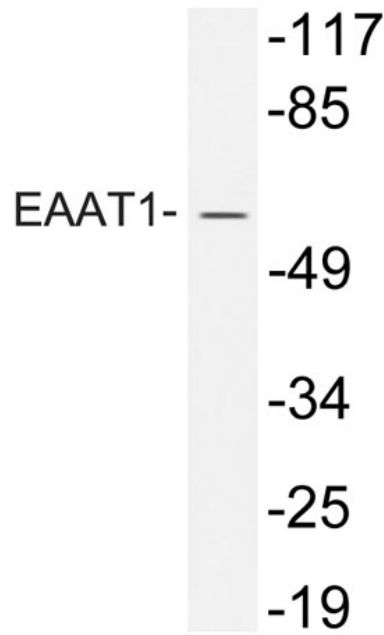


<b>Product name:</b>	EAT1 Rabbit Polyclonal Antibody
<b>Cat number:</b>	ABE2216
<b>Conjugate:</b>	unconjugated
<b>Size:</b>	100 ug
<b>Clone:</b>	Polyclonal
<b>Concentration:</b>	1 mg/ml
<b>Host:</b>	Rabbit
<b>Isotype:</b>	IgG
<b>Immunogen:</b>	The antiserum was produced against synthesized peptide derived from human EAAT1. AA range:492-541
<b>Reactivity:</b>	Human;Rat;Mouse;
<b>Applications:</b>	Western Blot: 1/500 - 1/2000. ELISA: 1/10000. Not yet tested in other applications.
<b>Molecular Weight:</b>	65kD
<b>Purification:</b>	The antibody was affinity-purified from rabbit antiserum by affinity-chromatography using epitope-specific immunogen.
<b>Form:</b>	liquid
<b>Buffer:</b>	Liquid in PBS containing 50% glycerol, 0.5%BSAand0.02% sodium azide.
<b>Storage:</b>	-20°C/1 year
<b>Background:</b>	This gene encodes a member of a member of a high affinity glutamate transporter family. This gene functions in the termination of excitatory neurotransmission in central nervous system. Mutations are associated with episodic ataxia, Type 6. Alternative splicing results in multiple transcript variants.[provided by RefSeq, Feb 2014],



Western Blot analysis of various cells using EAAT1 Polyclonal Antibody



Western blot analysis of lysate from HeLa cells, using EAAT1 antibody.