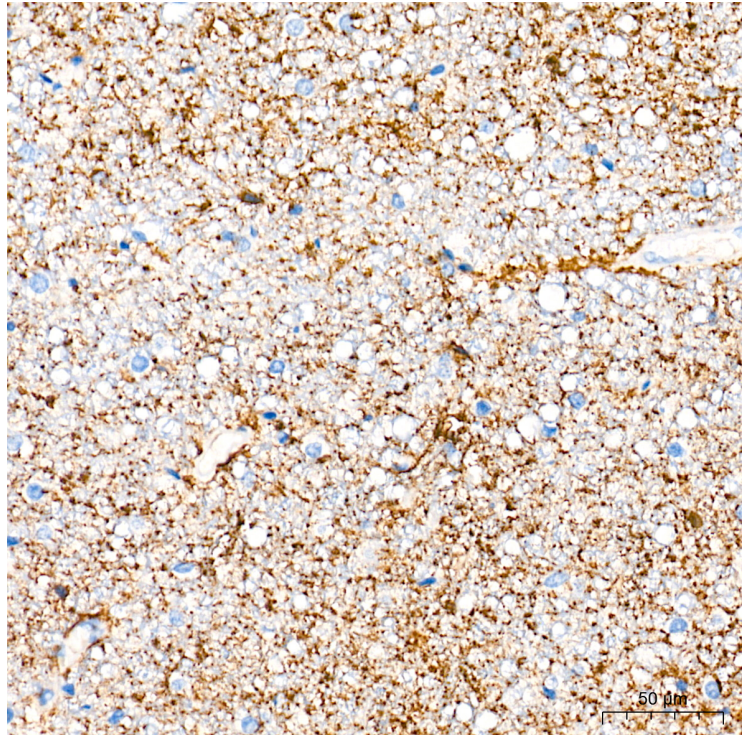
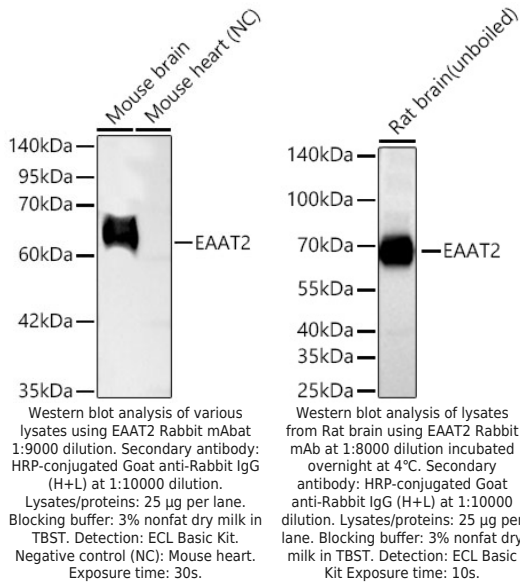

Product name:	EAAT2 Rabbit Monoclonal Antibody
Cat number:	MAB25213
Conjugate:	Unconjugated
Size:	100 ug
Clone:	ARC63682
Concentration:	1mg/ml
Host:	Rabbit
Isotype:	IgG
Immunogen:	Synthetic peptide. This information is considered to be commercially sensitive.
Reactivity:	Human,Mouse,Rat
Applications:	WB 1:9000 - 1:36000 IHC-P 1:800 - 1:8000 IF/ICC 1:200 - 1:800 ELISA Recommended starting concentration is 1 µg/mL. Please optimize the concentration based on your specific assay requirements.
Molecular Weight:	62kDa/
Purification:	Affinity purification
Form:	liquid
Buffer:	PBS containing 50% glycerol and 0.05% BSA, preserved with proclin300 or sodium azide (as specified on the Certificate of Analysis), pH 7.3.
Storage:	Store at -20°C. Avoid freeze / thaw cycles.
Background:	This gene encodes a member of a family of solute transporter proteins. The membrane-bound protein is the principal transporter that clears the excitatory neurotransmitter glutamate from the extracellular space at synapses in the central nervous system. Glutamate clearance is necessary for proper synaptic activation and to prevent neuronal damage from excessive activation of glutamate receptors. Improper regulation of this gene is thought to be associated with several neurological disorders. Alternatively spliced transcript variants of this gene have been identified.



Immunohistochemistry analysis of paraffin-embedded Human brain tissue using EAAT2 Rabbit mAb at a dilution of 1:8000 (40x lens). High pressure antigen retrieval performed with 0.01M Tris-EDTA Buffer(pH 9.0) prior to IHC staining.