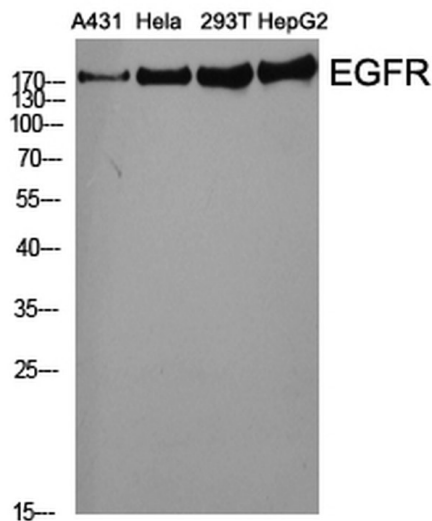
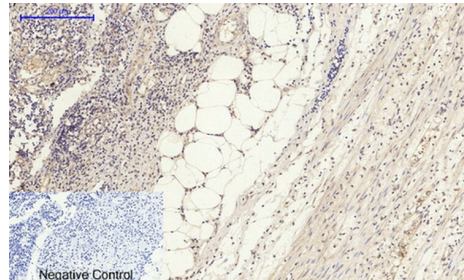


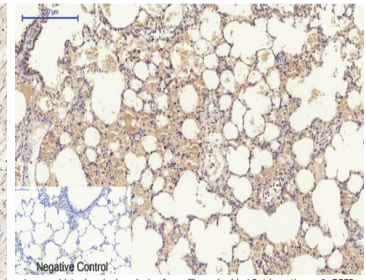
| | |
|-----------------------|--|
| Product name: | EGFR / HER1 |
| Cat number: | AB-84336 |
| Size: | 100 ug |
| Clone: | POLY |
| Concentration: | 1mg/ml |
| Host: | Rb |
| Isotype: | IgG |
| Immunogen: | Synthesized peptide derived from human EGFR around the non-phosphorylation site of Y1016. |
| Reactivity: | Hu, Ms, Rt |
| Applications: | Western Blot: 1:500-1:2000 Immunohistochemistry: 1:100-1:300 Immunofluorescence: 1:200-1:1000 ELISA: 1:5000 |
| Purification: | The antibody was affinity-purified from rabbit antiserum by affinity-chromatography using an epitope-specific immunogen. |
| Form: | Liquid |
| Buffer: | Liquid in PBS containing 50% glycerol, 0.5% BSA and 0.02% sodium azide. |
| Storage: | Store at -20°C, and avoid repeat freeze-thaw cycles. |
| Background: | EGFR polyclonal antibody detects endogenous levels of EGFR protein. |



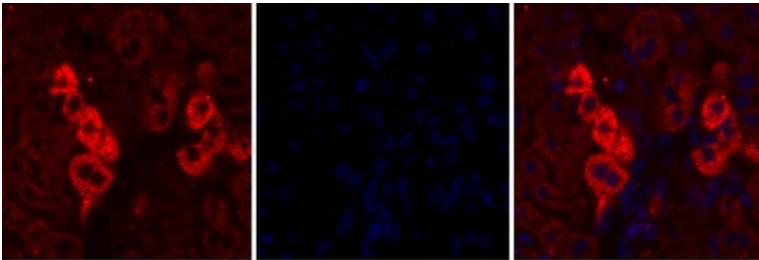
Western Blot analysis of various cell using EGFR antibody at dilution of 1:2000



Immunohistochemical analysis of paraffin-embedded Human Appendix tissue. 1. EGFR Polyclonal Antibody was diluted at 1:200 (4°C overnight). 2. Sodium citrate pH 6.0 was used for antibody retrieval (>98°C, 20min). 3. Secondary antibody was diluted at 1:200 (room temperature, 30min). Negative control was used by secondary antibody only.



Immunohistochemical analysis of paraffin-embedded Rat lung tissue. 1. EGFR Polyclonal Antibody was diluted at 1:200 (4°C overnight). 2. Sodium citrate pH 6.0 was used for antibody retrieval (>98°C, 20min). 3. Secondary antibody was diluted at 1:200 (room temperature, 30min). Negative control was used by secondary antibody only.



A B C
Immunofluorescence analysis of mouse-liver tissue. 1, EGFR Polyclonal antibody (red) was diluted at 1:200 (+4°C, overnight). 2, Cy3 labeled Secondary antibody was diluted at 1:300 (room temperature, 50min) 3, Picture B: DAPI (Blue) 10 min. Picture A: Target Picture B: DAPI Picture C: merge A+B