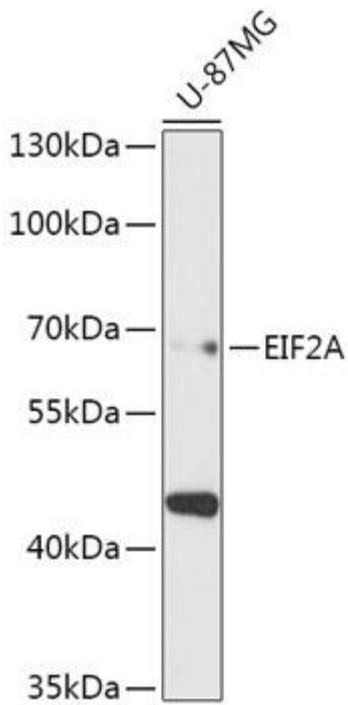


---

<b>Product name:</b>	EIF2A
<b>Cat number:</b>	AB-84175
<b>Size:</b>	100 ug
<b>Clone:</b>	POLY
<b>Concentration:</b>	1mg/ml
<b>Host:</b>	Rb
<b>Isotype:</b>	igG
<b>Immunogen:</b>	A synthetic peptide of human EIF2A
<b>Reactivity:</b>	Hu, Ms
<b>Applications:</b>	Western Blot: 1:1000
<b>Molecular Weight:</b>	65kDa
<b>Purification:</b>	Aff. Pur.
<b>Form:</b>	Liquid
<b>Buffer:</b>	PBS with 0.02% sodium azide,50% glycerol,pH7.3
<b>Storage:</b>	Store at -20°C, and avoid repeat freeze-thaw cycles.
<b>Background:</b>	<p>This gene encodes a eukaryotic translation initiation factor that catalyzes the formation of puromycin-sensitive 80 S preinitiation complexes and the poly(U)-directed synthesis of polyphenylalanine at low concentrations of Mg<sup>2+</sup>. This gene should not be confused with eIF2-alpha (EIF2S1, Gene ID: 1965), the alpha subunit of the eIF2 translation initiation complex. Although both of these proteins function in binding initiator tRNA to the 40 S ribosomal subunit, the encoded protein does so in a codon-dependent manner, whereas eIF2 complex requires GTP. Alternative splicing of this gene results in multiple transcript variants encoding different isoforms.</p>



Western blot analysis of extracts of U-87MG cells, using EIF2A antibody at 1:1000 dilution.

Secondary antibody: HRP Goat Anti- Rabbit IgG (H+L) at 1:10000 dilution. Lysates/proteins: 25ug per lane. Blocking buffer: 3% nonfat dry milk in TBST. Detection: ECL Basic Kit. Exposure time: 90s.