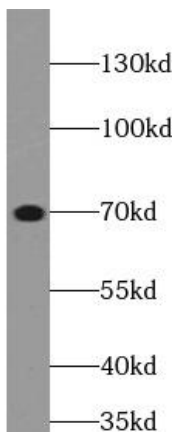
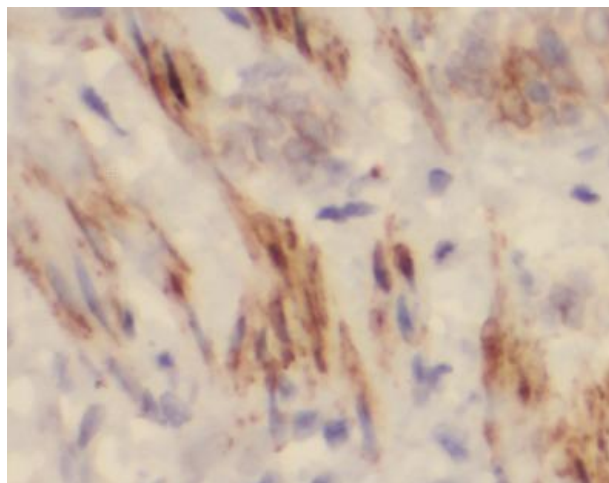


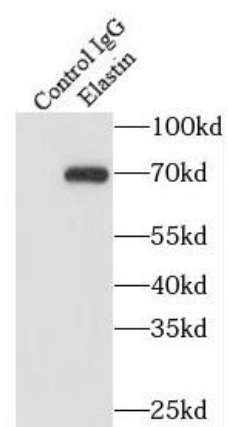
Product name:	Elastin Rabbit Polyclonal Antibody
Cat number:	AB-84740
Conjugate:	Unconjugated
Size:	100 ug
Clone:	POLY
Concentration:	1mg/ml
Host:	Rabbit
Isotype:	IgG
Immunogen:	elastin
Reactivity:	Human, Rat, Mouse
Applications:	Western Blot: 1:200-1:1000 Immunohistochemistry: 1:20-1:200
Molecular Weight:	68 kDa
Purification:	Immunogen affinity purified
Form:	Liquid
Buffer:	PBS with 0.02% sodium azide and 50% glycerol pH 7.3.
Storage:	Store at -20°C for 12 months (Avoid repeated freeze / thaw cycles.)
Background:	Major structural protein of tissues such as aorta and nuchal ligament, which must expand rapidly and recover completely. Molecular determinant of the late arterial morphogenesis, stabilizing arterial structure by regulating proliferation and organization of vascular smooth muscle(By similarity).



Mouse lung tissue were subjected to SDS PAGE followed by western blot with Elastin Antibody at dilution of 1:500



Immunohistochemistry of paraffin-embedded mouse lung tissue slide using Elastin at dilution of 1:100



IP result of anti-Elastin (IP: Elastin, 4ug; Detection: Elastin 1:300) with human placenta tissue lysate 4000 ug