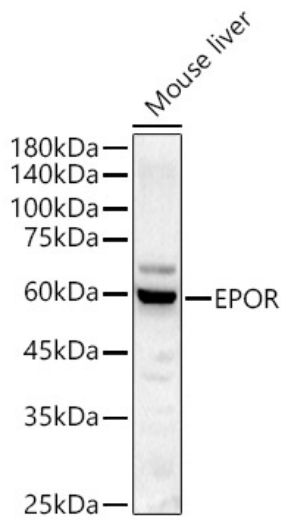
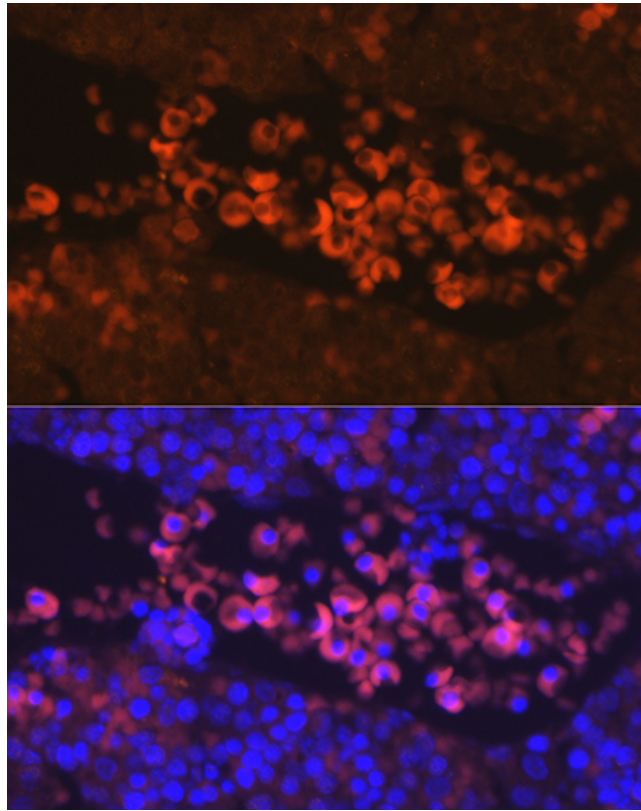


---

<b>Product name:</b>	EPOR Rabbit Polyclonal Antibody
<b>Cat number:</b>	AB-84737
<b>Conjugate:</b>	Unconjugated
<b>Size:</b>	100 ug
<b>Clone:</b>	POLY
<b>Concentration:</b>	1mg/ml
<b>Host:</b>	Rabbit
<b>Isotype:</b>	IgG
<b>Immunogen:</b>	A synthetic peptide corresponding to a sequence within amino acids 400-500 of human EPOR
<b>Reactivity:</b>	Human, Rat, Mouse
<b>Applications:</b>	Western Blot: 1:500 - 1:1000 Immunofluorescence: 1:50 - 1:200 Immunocytochemistry: 1:50 - 1:200
<b>Molecular Weight:</b>	Observed Molecular Weight: 65kDa / Calculated Molecular Weight: 60KDa
<b>Purification:</b>	Affinity purification
<b>Form:</b>	Liquid
<b>Buffer:</b>	Liquid in PBS containing 50% glycerol, 0.5% BSA and 0.02% sodium azide.
<b>Storage:</b>	Store at -20°C. Avoid freeze / thaw cycles.
<b>Background:</b>	This gene encodes the erythropoietin receptor which is a member of the cytokine receptor family. Upon erythropoietin binding, this receptor activates Jak2 tyrosine kinase which activates different intracellular pathways including: Ras/MAP kinase, phosphatidylinositol 3-kinase and STAT transcription factors. The stimulated erythropoietin receptor appears to have a role in erythroid cell survival. Defects in the erythropoietin receptor may produce erythroleukemia and familial erythrocytosis. Dysregulation of this gene may affect the growth of certain tumors. Alternate splicing results in multiple transcript variants.



Western blot analysis of Mouse liver, using EPOR antibody at 1:1000 dilution. Secondary antibody: HRP Goat Anti-Rabbit IgG (H+L) at 1:10000 dilution. Lysates/proteins: 25ug per lane. Blocking buffer: 3% nonfat dry milk in TBST. Detection: ECL West Pico Plus. Exposure time: 60s.



Immunofluorescence analysis of Mouse fetal using EPOR Rabbit pAb at dilution of 1:100. Blue: DAPI for nuclear staining.