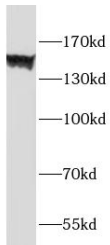
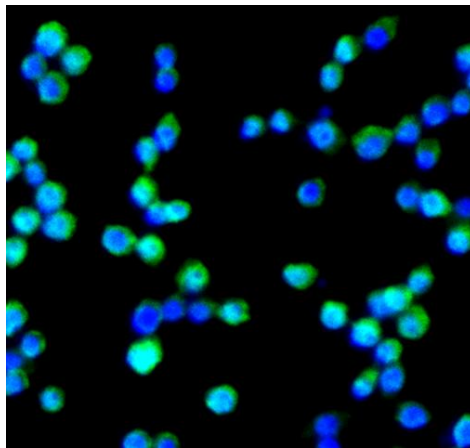


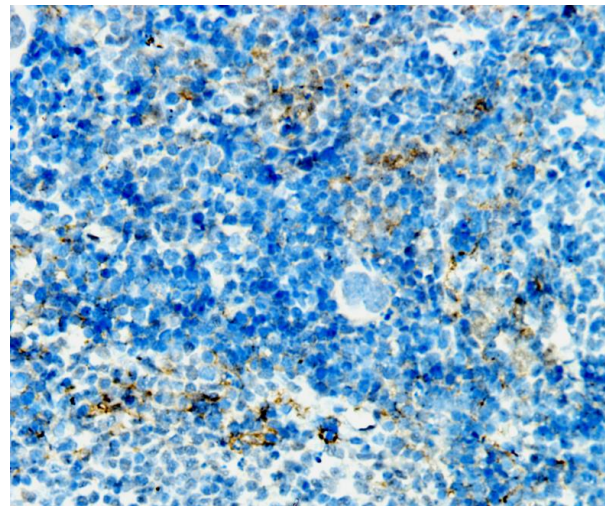
|                          |   |
|--------------------------|---|
| <b>Product name:</b>     | F4/80 Rabbit Polyclonal Antibody  |
| <b>Cat number:</b>       | AB-84162  |
| <b>Conjugate:</b>        | Unconjugated  |
| <b>Size:</b>             | 100 ug  |
| <b>Clone:</b>            | Poly  |
| <b>Concentration:</b>    | 1mg/ml  |
| <b>Host:</b>             | Rabbit  |
| <b>Isotype:</b>          | IgG   |
| <b>Immunogen:</b>        | EGF-like module containing, mucin-like, hormone receptor-like sequence 1                      |
| <b>Reactivity:</b>       | Human, Mouse, Rat   |
| <b>Applications:</b>     | Western Blot: 1:500-1:1000 Immunohistochemistry: 1:20-1:200<br>Immunofluorescence: 1:50-1:500 |
| <b>Molecular Weight:</b> | 160 kDa   |
| <b>Purification:</b>     | Immunogen affinity purified   |
| <b>Form:</b>             | Liquid  |
| <b>Buffer:</b>           | PBS with 0.02% sodium azide and 50% glycerol pH 7.3   |
| <b>Storage:</b>          | Store at -20°C for 12 months (Avoid repeated freeze / thaw cycles.)                           |



HL-60 cells were subjected to SDS PAGE followed by western blot with F4/80 Antibody at dilution of 1:1000



Immunofluorescent analysis of (10% Formaldehyde) fixed Raw264.7 cells using F4/80 antibody at dilution of 1:50 and FITC-conjugated Goat Anti-Rabbit IgG(H+L)



Immunohistochemistry of paraffin-embedded mouse spleen tissue slide using F4/80 Antibody at dilution of 1:200