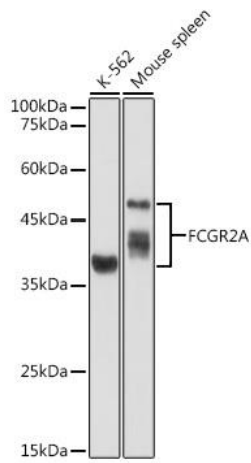
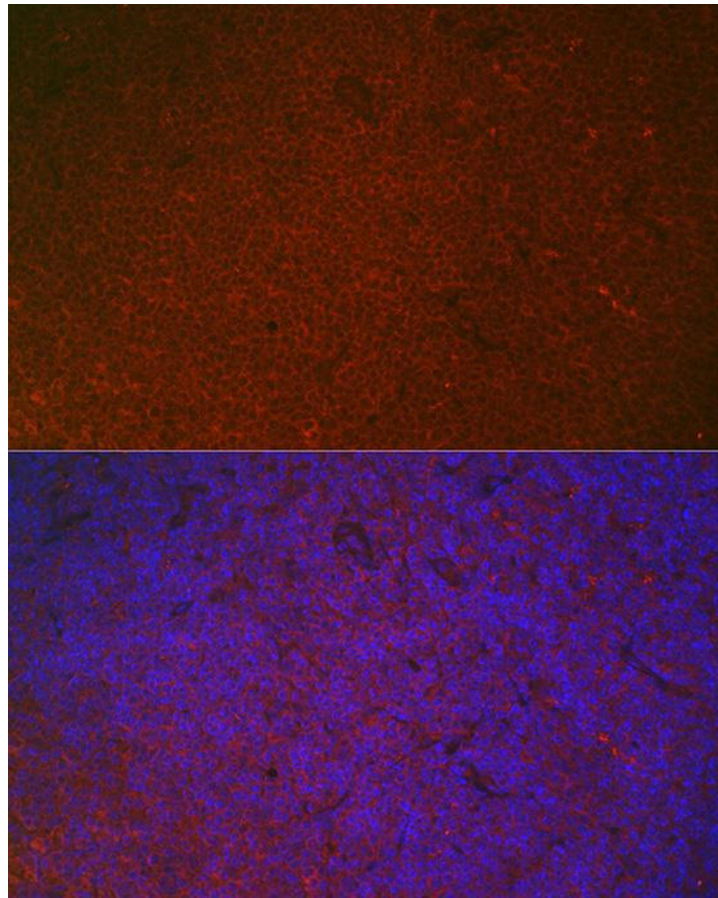


---

|                          |  |
|--------------------------|--|
| <b>Product name:</b>     | FCGR2A   |
| <b>Cat number:</b>       | AB-84343   |
| <b>Size:</b>             | 100 ug   |
| <b>Clone:</b>            | POLY   |
| <b>Concentration:</b>    | 1mg/ml   |
| <b>Host:</b>             | Rb   |
| <b>Isotype:</b>          | IgG  |
| <b>Immunogen:</b>        | Recombinant fusion protein containing a sequence corresponding to amino acids 34-316 of human FCGR2A (NP_067674.2).  |
| <b>Reactivity:</b>       | Hu, Ms   |
| <b>Applications:</b>     | Western Blot: 1:500 - 1:2000 Immunofluorescence: 1:50 - 1:200  |
| <b>Molecular Weight:</b> | 40-50kDa   |
| <b>Purification:</b>     | Aff. Pur.  |
| <b>Form:</b>             | Liquid   |
| <b>Buffer:</b>           | PBS with 0.02% sodium azide,50% glycerol,pH7.3.  |
| <b>Storage:</b>          | Store at -20°C. Avoid freeze / thaw cycles.  |
| <b>Background:</b>       | This gene encodes one member of a family of immunoglobulin Fc receptor genes found on the surface of many immune response cells. The protein encoded by this gene is a cell surface receptor found on phagocytic cells such as macrophages and neutrophils, and is involved in the process of phagocytosis and clearing of immune complexes. Alternative splicing results in multiple transcript variants. |



Western blot analysis of extracts of various cell lines, using FCGR2A antibody 1:1000 dilution. Secondary antibody: HRP Goat Anti-Rabbit IgG (H+L) at 1:10000 dilution. Lysates/proteins: 25ug per lane. Blocking buffer: 3% nonfat dry milk in TBST. Detection: ECL West Pico Plus. Exposure time: 90s.



Immunofluorescence analysis of mouse spleen using FCGR2A Rabbit pAb at dilution of 1:100 (40x lens). Blue: DAPI for nuclear staining.