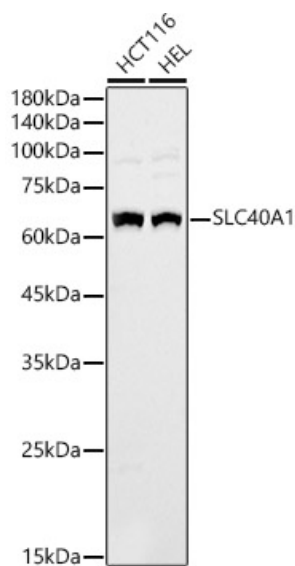


Product name:	FERROPORTIN 1 (SLC40A1) Rabbit Polyclonal Antibody
Cat number:	AB-84771
Conjugate:	Unconjugated
Size:	100 ug
Clone:	POLY
Concentration:	1mg/ml
Host:	Rabbit
Isotype:	IgG
Immunogen:	A synthetic peptide corresponding to a sequence within amino acids 250-300 of human SLC40A1.
Reactivity:	Human
Applications:	Western Blot: 1:1000-1:5000
Molecular Weight:	62-70kDa
Purification:	Affinity purification
Form:	Liquid
Buffer:	PBS with 0.02% sodium azide, 50% glycerol, PH 7.3
Storage:	Store at -20°C. Avoid repeated freeze-thaw cycles.
Background:	The protein encoded by this gene is a cell membrane proteins that may be involved in iron export from duodenal epithelial cells. Defects in this gene are a cause of hemochromatosis type 4 (HFE4).



Western blot analysis of extracts of various cell lines, using Ferroprotein antibody at 1:1000 dilution