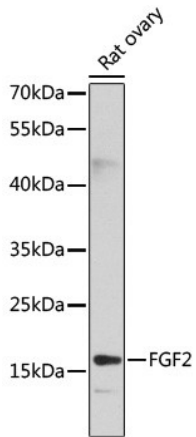
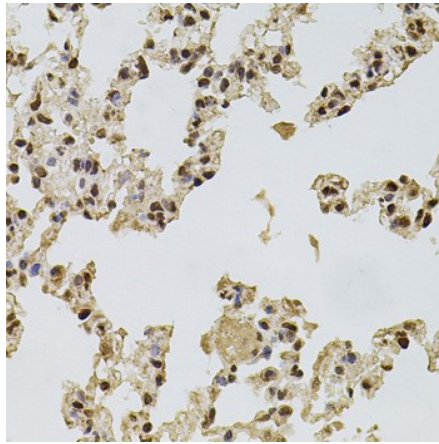


---

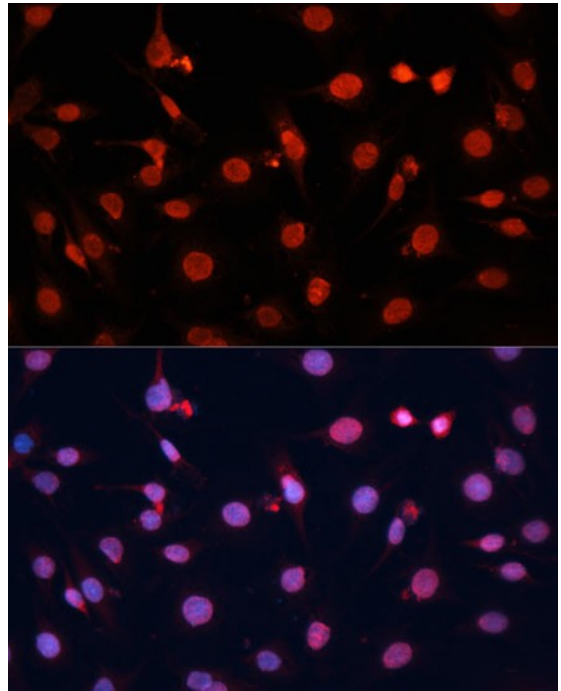
<b>Product name:</b>	FGF2
<b>Cat number:</b>	AB-90101
<b>Conjugate:</b>	Unconjugated
<b>Size:</b>	100 ug
<b>Clone:</b>	POLY
<b>Concentration:</b>	1mg/ml
<b>Host:</b>	Rb
<b>Isotype:</b>	IgG
<b>Immunogen:</b>	Recombinant fusion protein containing a sequence corresponding to amino acids 143-288 of human FGF2
<b>Reactivity:</b>	Hu,Ms,Rt
<b>Applications:</b>	Western Blot : 1:500-1:2,000 Immunofluorescence/Immunocytochemistry: 1:50-1:200 Immunohistochemistry (paraffin, formalin, frozen Tissues): 1:50-1:200
<b>Molecular Weight:</b>	20kDa
<b>Purification:</b>	Aff. Pur.
<b>Form:</b>	Liquid
<b>Buffer:</b>	Liquid in PBS with 0,02 % Sodium Azide and 50% glycerol pH 7.3.
<b>Storage:</b>	Storage for short term at 4°C recommended, for longer term at -20°C, minimize freeze/thaw cycles
<b>Background:</b>	<p>The protein encoded by this gene is a member of the fibroblast growth factor (FGF) family. FGF family members bind heparin and possess broad mitogenic and angiogenic activities. This protein has been implicated in diverse biological processes, such as limb and nervous system development, wound healing, and tumor growth. The mRNA for this gene contains multiple polyadenylation sites, and is alternatively translated from non-AUG (CUG) and AUG initiation codons, resulting in five different isoforms with distinct properties. The CUG-initiated isoforms are localized in the nucleus and are responsible for the intracrine effect, whereas, the AUG-initiated form is mostly cytosolic and is responsible for the paracrine and autocrine effects of this FGF.</p>



Western blot analysis of extracts of rat ovary, using FGF2 antibody at 1:1000 dilution. Secondary antibody: HRP Goat Anti-Rabbit IgG (H+L) at 1:10000 dilution. Lysates/proteins: 25ug per lane. Blocking buffer: 3% nonfat dry milk in TBST. Detection: ECL West Pico Kit Exposure time: 30s.



Immunohistochemistry of paraffin-embedded rat lung using FGF2 antibody at dilution of 1:100 (40x lens)



Immunofluorescence analysis of C6 cells using FGF2 Polyclonal Antibody at dilution of 1:100 (40x lens). Blue: DAPI for nuclear staining.