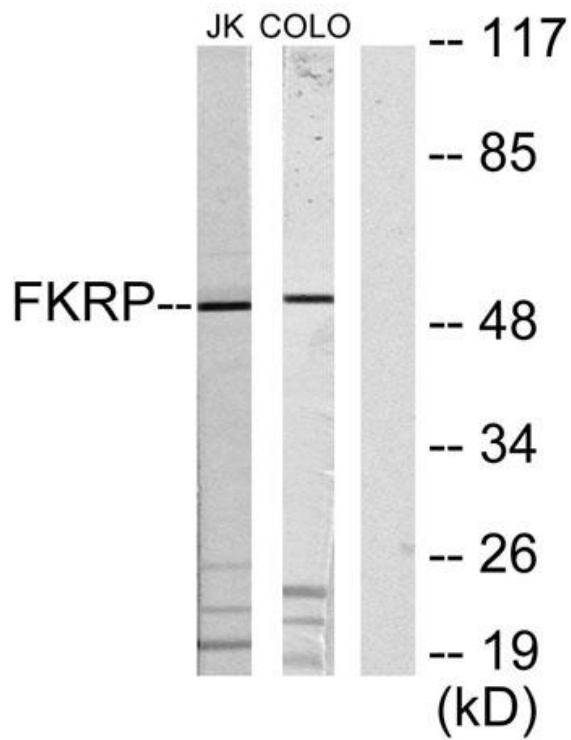


<b>Product name:</b>	FKRP Rabbit Polyclonal Antibody
<b>Cat number:</b>	AB-E7653
<b>Conjugate:</b>	Unconjugated
<b>Size:</b>	100 ug
<b>Clone:</b>	POLY
<b>Concentration:</b>	1mg/ml
<b>Host:</b>	Rabbit
<b>Isotype:</b>	IgG
<b>Immunogen:</b>	The antiserum was produced against synthesized peptide derived from human FKRP. AA range:1-50
<b>Reactivity:</b>	Human;Mouse;Rat
<b>Applications:</b>	Western Blot: 1/500 - 1/2000 Immunofluorescence: 1/200 - 1/1000
<b>Molecular Weight:</b>	50kD
<b>Purification:</b>	The antibody was affinity-purified from rabbit antiserum by affinity-chromatography using epitope-specific immunogen.
<b>Form:</b>	Liquid
<b>Buffer:</b>	Liquid in PBS containing 50% glycerol, 0.5% BSA and 0.02% sodium azide
<b>Storage:</b>	Store at -20°C. Avoid repeated freeze-thaw
<b>Background:</b>	This gene encodes a protein which is targeted to the medial Golgi apparatus and is necessary for posttranslational modification of dystroglycan. Mutations in this gene have been associated with congenital muscular dystrophy, mental retardation, and cerebellar cysts. Several alternatively spliced transcript variants of this gene have been described, but the full-length nature of some of these variants has not been determined.



Western blot analysis of lysates from Jurkat and COLO205 cells, using FKRP Antibody. The lane on the right is blocked with the synthesized peptide.