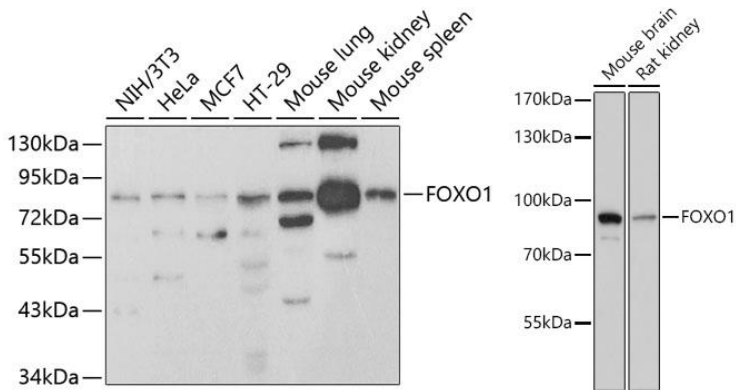
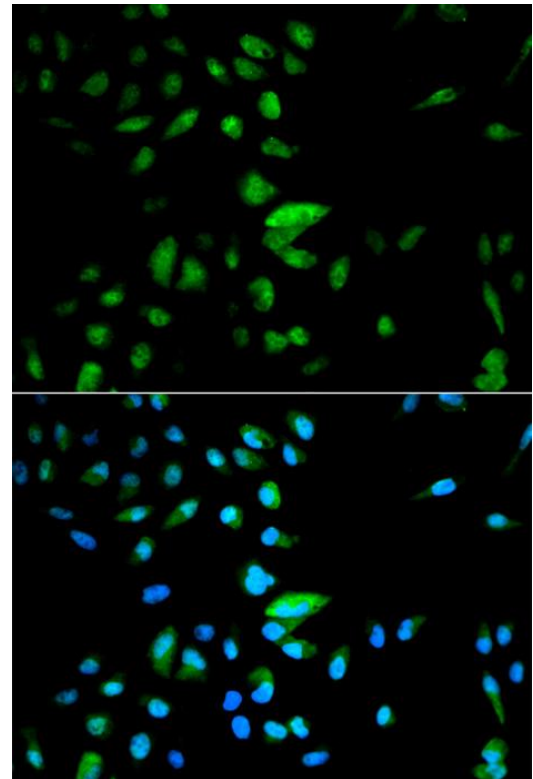


<b>Product name:</b>	FOXO1A
<b>Cat number:</b>	AB-82717
<b>Conjugate:</b>	Unconjugated
<b>Size:</b>	100 ug
<b>Clone:</b>	POLY
<b>Concentration:</b>	1mg/ml
<b>Host:</b>	Rb
<b>Isotype:</b>	IgG
<b>Immunogen:</b>	A synthetic peptide of human FOXO1
<b>Reactivity:</b>	Hu, Ms, Rt
<b>Applications:</b>	Western Blot: 1:500 - 1:1000 Immunofluorescence: 1:50 - 1:100
<b>Molecular Weight:</b>	85kDa
<b>Purification:</b>	Aff. Pur.
<b>Form:</b>	Liquid
<b>Buffer:</b>	PBS with 0.02% sodium azide, 50% glycerol, pH7.3.
<b>Storage:</b>	Store at -20°C, and avoid repeat freeze-thaw cycles.
<b>Background:</b>	This gene belongs to the forkhead family of transcription factors which are characterized by a distinct forkhead domain. The specific function of this gene has not yet been determined; however, it may play a role in myogenic growth and differentiation. Translocation of this gene with PAX3 has been associated with alveolar rhabdomyosarcoma.

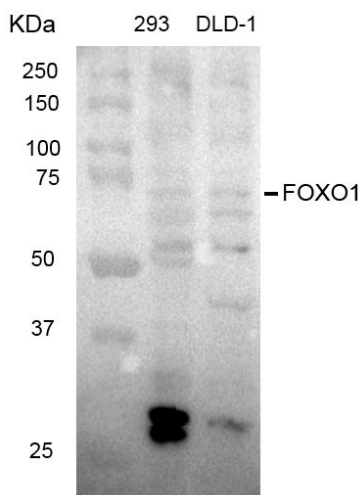


Western blot analysis of extracts of various cell lines, using FOXO1 antibody at 1:950 dilution. Secondary antibody: HRP Goat Anti- Rabbit IgG (H+L) at 1:10000 dilution. Lysates/proteins: 25ug per lane. Blocking buffer: 3% nonfat dry milk in TBST

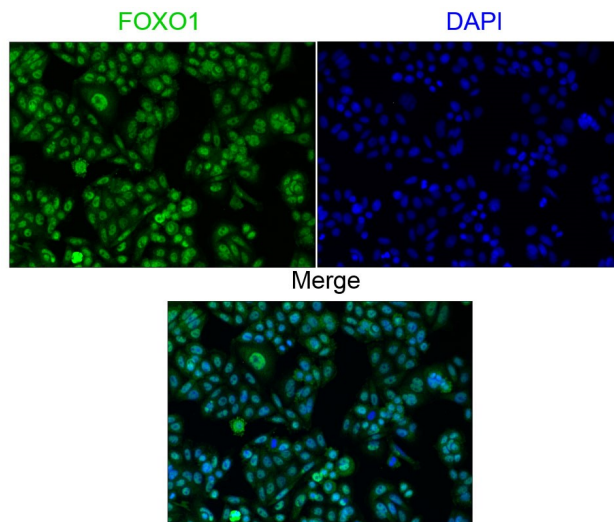
Western blot analysis of extracts of various cell lines, using FOXO1 antibody at 1:1000 dilution. Secondary antibody: HRP Goat Anti- Rabbit IgG (H+L) at 1:10000 dilution. Lysates/proteins: 25ug per lane. Blocking buffer: 3% nonfat dry milk in TBST. Detection: ECL West Pico Plus Exposure time: 90s.



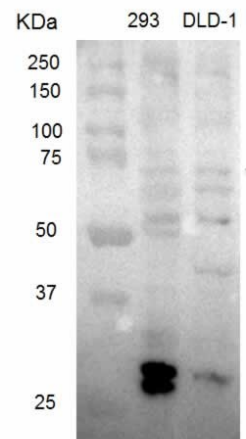
Immunofluorescence analysis of HeLa cells using FOXO1 antibody Blue: DAPI for nuclear staining.



Application: Western blot (WB) Sample 293T Loading Amount 20 ug Dilution 1:1000 Incubation time over night Temperature 4 °C Exposure 15s Observed Band 70 kDa Remarks Western blot analysis of extracts from HEK 293 cells and DLD-1 cells using FOXO1 Antibody (1:1000)



Application Immunofluorescence (IF) Sample SW480 Dilution 1:200 Incubation time over night Temperature 4 °C Remarks Immunofluorescent images of SW480 cells showing nuclear and cytoplasmic localization with FOXO1 Antibody 1:200 (left)



Application: Western blot (WB) Sample HEK293T, DLD-1 Loading Amount 25 ug Dilution 1:1000 Incubation time over night Temperature 4 °C Exposure 5s Observed Band 70 kDa Remarks Western blot analysis of extracts of various cell lines, using FOXO1 Polyclonal Antibody.