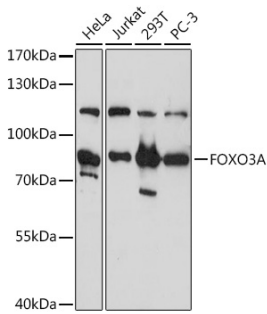
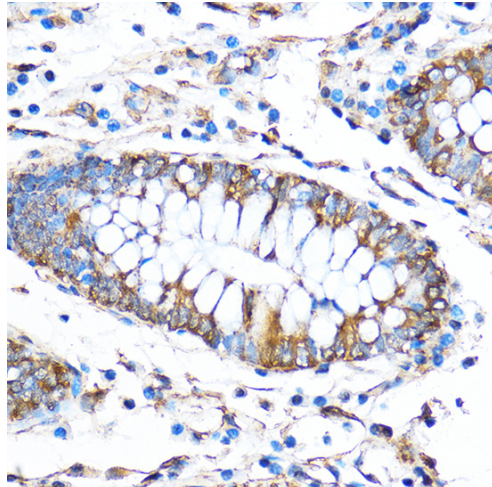


---

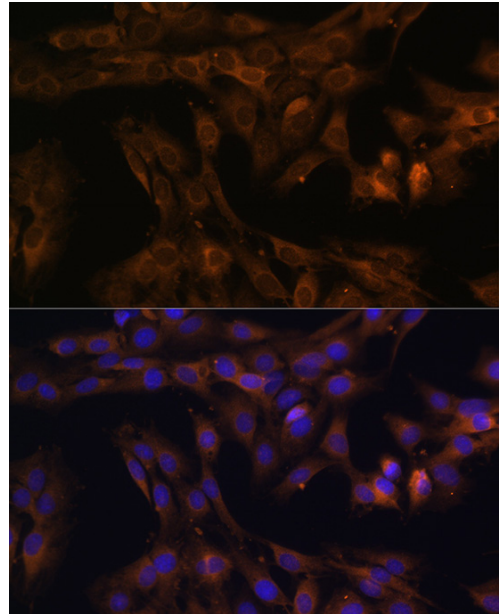
<b>Product name:</b>	FOXO3A Rabbit Polyclonal Antibody
<b>Cat number:</b>	AB0102
<b>Conjugate:</b>	Unconjugated
<b>Size:</b>	100 ug
<b>Concentration:</b>	1mg/ml
<b>Host:</b>	Rabbit
<b>Isotype:</b>	IgG
<b>Immunogen:</b>	Recombinant protein. This information is considered to be commercially sensitive.
<b>Reactivity:</b>	Human, Mouse, Rat
<b>Applications:</b>	WB 1:500 - 1:1000 IHC-P 1:50 - 1:200 IF/ICC 1:50 - 1:200 ELISA Recommended starting concentration is 1 µg/mL. Please optimize the concentration based on your specific assay requirements.
<b>Molecular Weight:</b>	80-90kDa
<b>Purification:</b>	Affinity purification
<b>Form:</b>	liquid
<b>Buffer:</b>	PBS containing 50% glycerol, preserved with proclin300 or sodium azide (as specified on the Certificate of Analysis), pH 7.3.
<b>Storage:</b>	Store at -20°C. Avoid freeze / thaw cycles.
<b>Background:</b>	Enables DNA binding activity; DNA-binding transcription factor activity, RNA polymerase II-specific; and mitochondrial transcription factor activity. Involved in several processes, including mitochondrial transcription; positive regulation of muscle atrophy; and positive regulation of pri-miRNA transcription by RNA polymerase II. Acts upstream of or within several processes, including extrinsic apoptotic signaling pathway in absence of ligand; female gonad development; and neuronal stem cell population maintenance. Located in cytosol; mitochondrial outer membrane; and nucleus. Part of protein-containing complex. Colocalizes with mitochondrial matrix. Is expressed in several structures, including alimentary system; brain; early embryo; genitourinary system; and hemolymphoid system. Used to study dermoid cyst of ovary. Orthologous to human FOXO3 (forkhead box O3).



Western blot analysis of various lysates using FOXO3A Rabbit pAb at 1:1000 dilution. Secondary antibody: HRP-conjugated Goat anti-Rabbit IgG (H+L) at 1:10000 dilution. Lysates/proteins: 25µg per lane. Blocking buffer: 3% nonfat dry milk in TBST. Detection: ECL West Pico Plus. Exposure time: 5s.



Immunohistochemistry analysis of paraffin-embedded Human colon using FOXO3A Rabbit pAb at dilution of 1:50 (40x lens). Microwave antigen retrieval performed with 0.01M PBS Buffer (pH 7.2) prior to IHC staining.



Immunofluorescence analysis of C6 cells using FOXO3A Rabbit pAb at dilution of 100 (40x lens). Secondary antibody: Cy3-conjugated Goat anti-Rabbit IgG (H+L) (AS007) at 1:500 dilution. Blue: DAPI for nuclear staining.