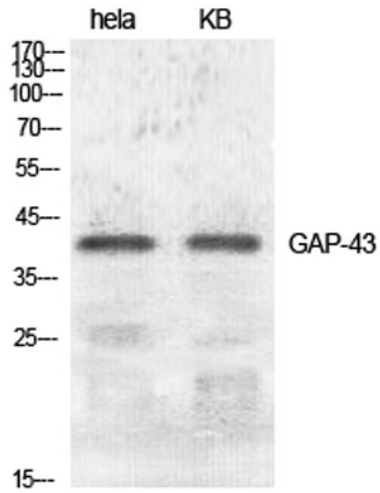
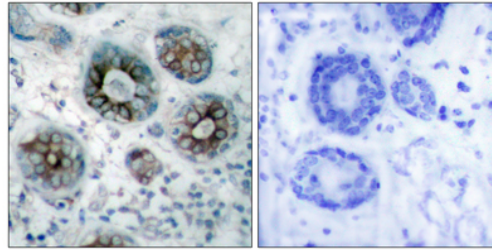


Product name:	GAP-43 Rabbit Polyclonal Antibody
Cat number:	ABE2398
Conjugate:	unconjugated
Size:	100 ug
Clone:	Polyclonal
Concentration:	1 mg/ml
Host:	Rabbit
Isotype:	IgG
Immunogen:	The antiserum was produced against synthesized peptide derived from human GAP43. AA range:8-57
Reactivity:	Human;Mouse;Rat
Applications:	Immunohistochemistry: 1/100 - 1/300. ELISA: 1/20000. Not yet tested in other applications.
Molecular Weight:	43kD
Form:	liquid
Storage:	-20°C/1 year
Background:	The protein encoded by this gene has been termed a 'growth' or 'plasticity' protein because it is expressed at high levels in neuronal growth cones during development and axonal regeneration. This protein is considered a crucial component of an effective regenerative response in the nervous system. Alternatively spliced transcript variants encoding distinct isoforms have been found for this gene. [provided by RefSeq, Jul 2008],



Western Blot analysis of various cells using GAP-43 Polyclonal Antibody diluted at 1:500



Immunohistochemistry analysis of paraffin-embedded human breast carcinoma tissue, using GAP43 Antibody. The picture on the right is blocked with the synthesized peptide.