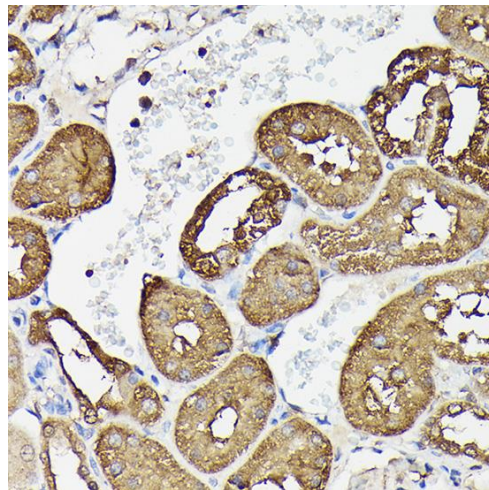
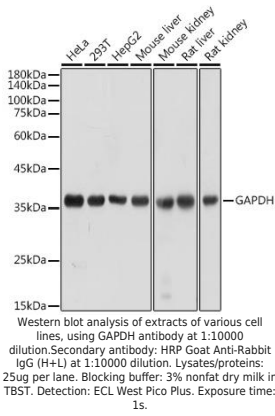
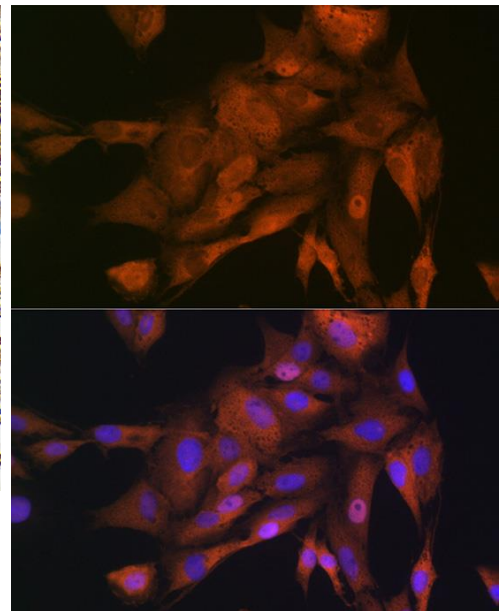


---

<b>Product name:</b>	GAPDH
<b>Cat number:</b>	AB-81594
<b>Conjugate:</b>	Unconjugated
<b>Size:</b>	100µg
<b>Clone:</b>	POLY
<b>Concentration:</b>	1mg/ml
<b>Host:</b>	Rb
<b>Isotype:</b>	IgG
<b>Immunogen:</b>	Recombinant fusion protein containing a sequence corresponding to amino acids 1-335 of human GAPDH (NP_002037.2).
<b>Reactivity:</b>	Hu, Ho, Cw, Pg, Ch, Rt, Ms
<b>Applications:</b>	Western Blot: 1:1000 - 1:10000 Immunohistochemistry: 1:50 - 1:100 Immunofluorescence: 1:50 - 1:100 Immunoprecipitation: 1:50 - 1:100
<b>Molecular Weight:</b>	36kDa
<b>Purification:</b>	Aff. Pur.
<b>Form:</b>	Liquid
<b>Buffer:</b>	PBS with 0.02% sodium azide, 50% glycerol, pH7.3.
<b>Storage:</b>	Store at -20°C. Avoid freeze / thaw cycles.
<b>Background:</b>	<p>This gene encodes a member of the glyceraldehyde-3-phosphate dehydrogenase protein family. The encoded protein has been identified as a moonlighting protein based on its ability to perform mechanistically distinct functions. The product of this gene catalyzes an important energy-yielding step in carbohydrate metabolism, the reversible oxidative phosphorylation of glyceraldehyde-3-phosphate in the presence of inorganic phosphate and nicotinamide adenine dinucleotide (NAD). The encoded protein has additionally been identified to have uracil DNA glycosylase activity in the nucleus. Also, this protein contains a peptide that has antimicrobial activity against <i>E. coli</i>, <i>P. aeruginosa</i>, and <i>C. albicans</i>. Studies of a similar protein in mouse have assigned a variety of additional functions including nitrosylation of nuclear proteins, the regulation of mRNA stability, and acting as a transferrin receptor on the cell surface of macrophage. Many pseudogenes similar to this locus are present in the human genome. Alternative splicing results in multiple transcript variants.</p>



Immunohistochemistry of paraffin embedded rat kidney using GAPDH Rabbit pAb at dilution of 1:100 (40x lens).



Immunofluorescence analysis of C6 cells using GAPDH Rabbit pAb at dilution of 1:100 (40x lens). Blue: DAPI for nuclear staining.