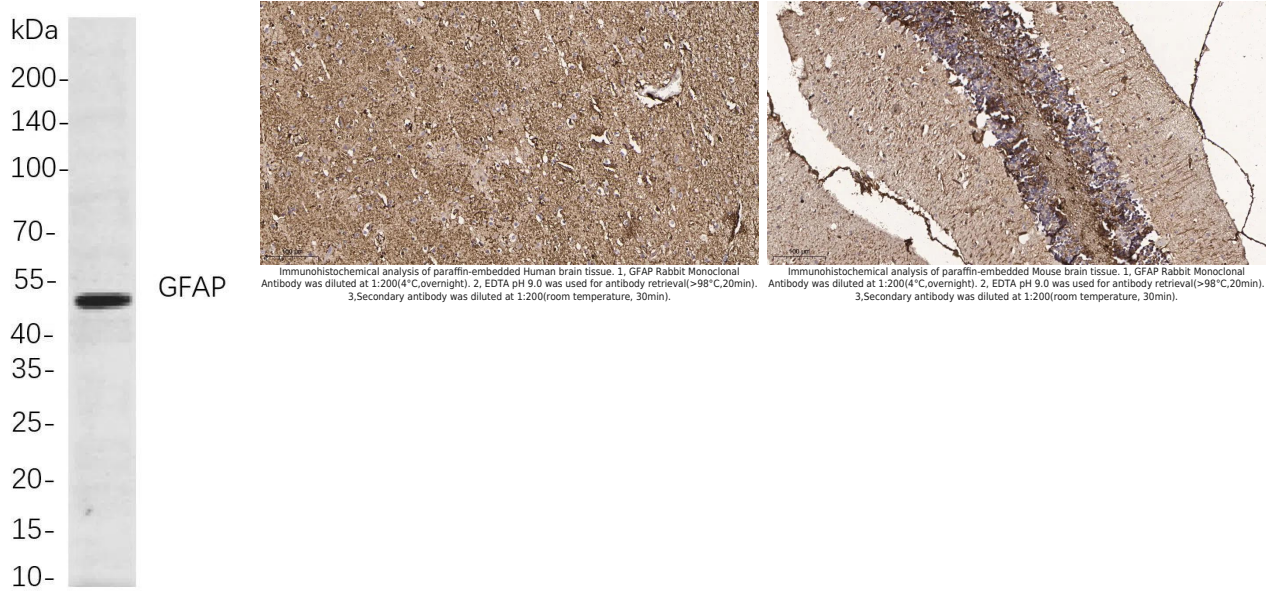


<b>Product name:</b>	GFAP Rabbit Monoclonal Antibody
<b>Cat number:</b>	MABN21476
<b>Conjugate:</b>	Unconjugated
<b>Size:</b>	200µL
<b>Concentration:</b>	1mg/ml
<b>Host:</b>	Rabbit
<b>Isotype:</b>	IgG,Kappa
<b>Reactivity:</b>	Human,Mouse,Rat
<b>Applications:</b>	WB 1:1000-1:5000,IHC 1:200-1:1000,ICC/IF 1:200-1:1000,ELISA 1:5000-1:20000,IP 1:50-1:200
<b>Molecular Weight:</b>	Calculated MW:50kD;Observed MW:50kD
<b>Purification:</b>	Affinity purification
<b>Form:</b>	liquid
<b>Buffer:</b>	PBS, 50% glycerol, 0.05% Proclin 300, 0.05%protective protein
<b>Storage:</b>	Store at 4°C short term. Aliquot and store at -20°C long term. Avoid freeze/thaw cycles.
<b>Background:</b>	Cell localization:Cytoplasm.This gene encodes one of the major intermediate filament proteins of mature astrocytes. It is used as a marker to distinguish astrocytes from other glial cells during development. Mutations in this gene cause Alexander disease, a rare disorder of astrocytes in the central nervous system. Alternative splicing results in multiple transcript variants encoding distinct isoforms.



Western blot analysis of lysates from Mouse brain cells, using GFAP Rabbit mAb. The HRP-conjugated Goat anti-Rabbit IgG antibody was used to detect the antibody.