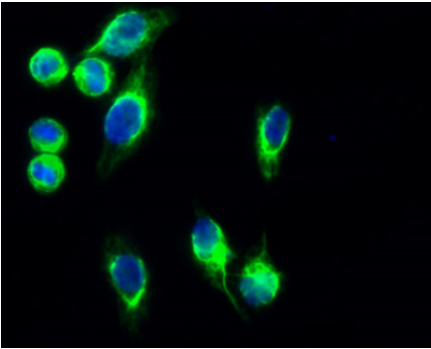
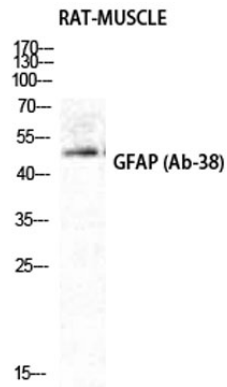
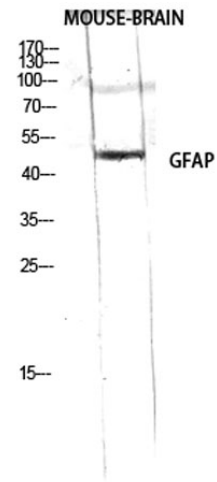

Product name:	GFAP Rabbit Polyclonal Antibody
Cat number:	ABE5510
Conjugate:	unconjugated
Size:	100 ug
Clone:	Polyclonal
Concentration:	1 mg/ml
Host:	Rabbit
Isotype:	IgG
Immunogen:	The antiserum was produced against synthesized peptide derived from human GFAP. AA range:11-60
Reactivity:	Human;Rat;Mouse;
Applications:	Western Blot: 1/500 - 1/2000. Immunohistochemistry: 1/100 - 1/300. Immunofluorescence: 1/200 - 1/1000. ELISA: 1/5000. Not yet tested in other applications.
Molecular Weight:	50kD
Purification:	The antibody was affinity-purified from rabbit antiserum by affinity-chromatography using epitope-specific immunogen.
Form:	Liquid
Buffer:	Liquid in PBS containing 50% glycerol, 0.5%BSAand0.02% sodium azide
Storage:	-20°C/1 year
Background:	This gene encodes one of the major intermediate filament proteins of mature astrocytes. It is used as a marker to distinguish astrocytes from other glial cells during development. Mutations in this gene cause Alexander disease, a rare disorder of astrocytes in the central nervous system. Alternative splicing results in multiple transcript variants encoding distinct isoforms. [provided by RefSeq, Oct 2008],



Immunofluorescence analysis of HeLa cell. 1. GFAP Polyclonal Antibody(green) was diluted at 1:200 (4° overnight). 2. Goat Anti Rabbit Alexa Fluor 488 was diluted at 1:1000 (room temperature, 50min). 3. DAPI(blue) 10min.



Western Blot analysis of RAT-MUSCLE cells using GFAP Polyclonal Antibody diluted at 1:2000



Western Blot analysis of RAW using GFAP Polyclonal Antibody diluted at 1:2000