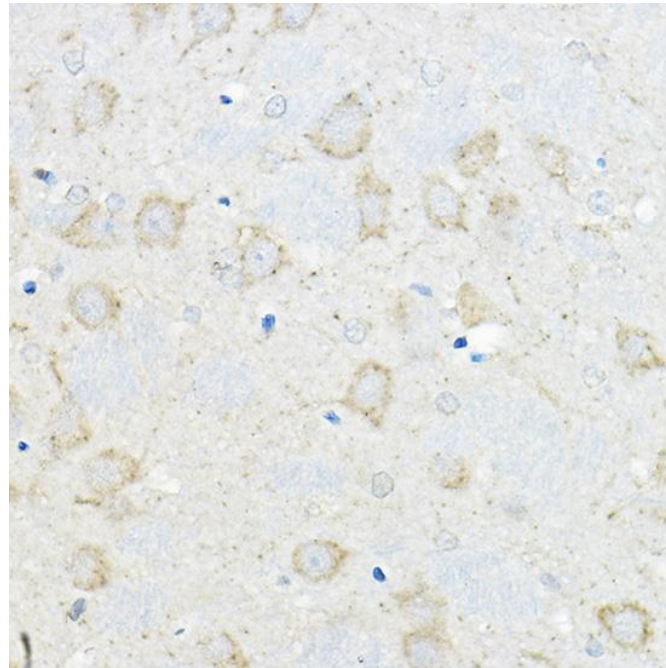
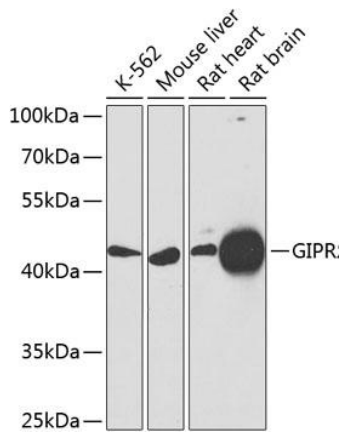
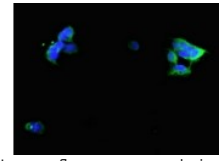

Product name:	GIPR
Cat number:	AB-84406
Size:	100ug
Clone:	POLY
Concentration:	1mg/ml
Host:	Rb
Isotype:	IgG
Immunogen:	Recombinant fusion protein containing a sequence corresponding to amino acids 22-138 of human GIPR.
Reactivity:	Hu, Ms, Rt
Applications:	vWestern Blot: 1:500 - 1:2000 Immunohistochemistry: 1:50 - 1:200 Immunofluorescence: 1:50 - 1:200 Flow cytometry: 1:50 - 1:200
Molecular Weight:	45kDa
Purification:	Aff. Pur.
Form:	Liquid
Buffer:	PBS with 0.02% sodium azide,50% glycerol,pH7.3.
Storage:	Store at -20°C. Avoid freeze / thaw cycles.
Background:	This gene encodes a G-protein coupled receptor for gastric inhibitory polypeptide (GIP), which was originally identified as an activity in gut extracts that inhibited gastric acid secretion and gastrin release, but subsequently was demonstrated to stimulate insulin release in the presence of elevated glucose. Mice lacking this gene exhibit higher blood glucose levels with impaired initial insulin response after oral glucose load. Defect in this gene thus may contribute to the pathogenesis of diabetes.



Immunohistochemistry of paraffin embedded rat brain using GIPR Rabbit pAb at dilution of 1:200 (40x lens).



Immunofluorescence analysis of 293 cells using GIPR polyclonal antibody (1:100). Secondary Antibody: Alexa Fluor 488 conjugated Goat anti Rabbit IgG