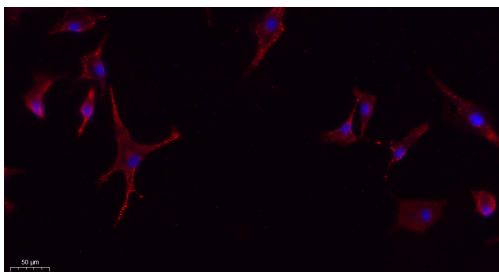
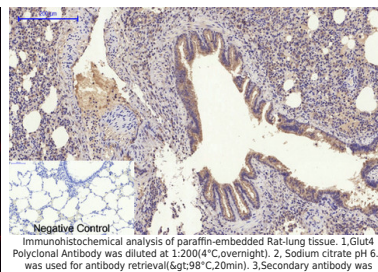


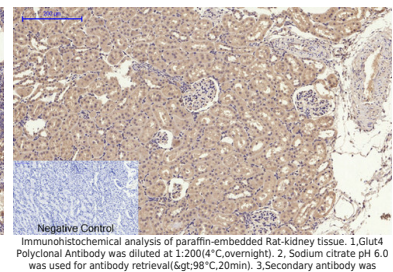
Product name:	GLUT 4 (glucose transporter 4)
Cat number:	AB-82631
Conjugate:	Unconjugated
Size:	100 ug
Clone:	POLY
Concentration:	1mg/ml
Host:	Rb
Isotype:	IgG
Immunogen:	The antiserum was produced against synthetic peptide derived from the N-terminal region of human SLC2A4, AA range 21-70
Reactivity:	Hu,Ms,Rt
Applications:	WB 1:500 - 1:1000 IHC: 1:100-200 IF 1:100-200
Molecular Weight:	56KD
Purification:	Aff. Pur.
Form:	Liquid
Buffer:	PBS containing 50% glycerol, 0.5% BSA and 0.02% sodium azide
Storage:	Store at -20°C. Avoid repeated freeze-thaw cycles.
Background:	This gene is a member of the solute carrier family 2 (facilitated glucose transporter) family and encodes a protein that functions as an insulin-regulated facilitative glucose transporter. In the absence of insulin, this integral membrane protein is sequestered within the cells of muscle and adipose tissue. Within minutes of insulin stimulation, the protein moves to the cell surface and begins to transport glucose across the cell membrane. Mutations in this gene have been associated with noninsulin-dependent diabetes mellitus (NIDDM).



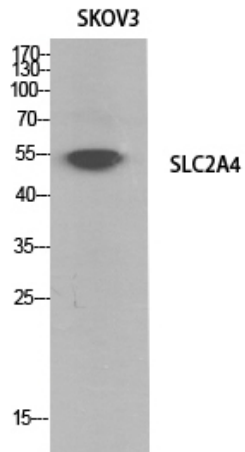
Immunofluorescence analysis of A549. 1, primary Antibody (red) was diluted at 1:200(4°C overnight). 2, Goat Anti Rabbit IgG (H&Amp;L) - Alexa Fluor 594 Secondary antibody was diluted at 1:1000(room temperature, 30min). 3, Picture B: DAPI(blue) 10min.



Negative Control
Immunohistochemical analysis of paraffin-embedded Rat-Lung tissue. 1, GLUT4 Polyclonal Antibody was diluted at 1:200(4°C, overnight). 2, Sodium citrate pH 6.0 was used for antibody retrieval (>98°C, 20min). 3, Secondary antibody was diluted at 1:200(room temperature, 30min). Negative control was used by secondary antibody only.



Negative Control
Immunohistochemical analysis of paraffin-embedded Rat-kidney tissue. 1, GLUT4 Polyclonal Antibody was diluted at 1:200(4°C, overnight). 2, Sodium citrate pH 6.0 was used for antibody retrieval (>98°C, 20min). 3, Secondary antibody was diluted at 1:200(room temperature, 30min). Negative control was used by secondary antibody only.



Western Blot analysis of SKOV3 cells using Glut4 Polyclonal Antibody. Secondary antibody was diluted at 1:20000