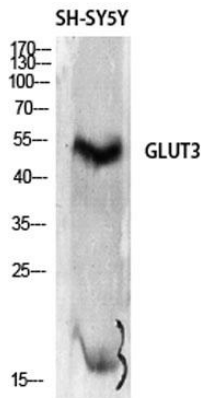
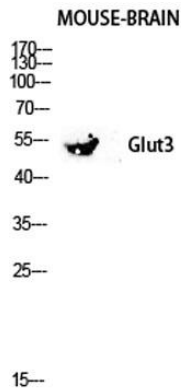


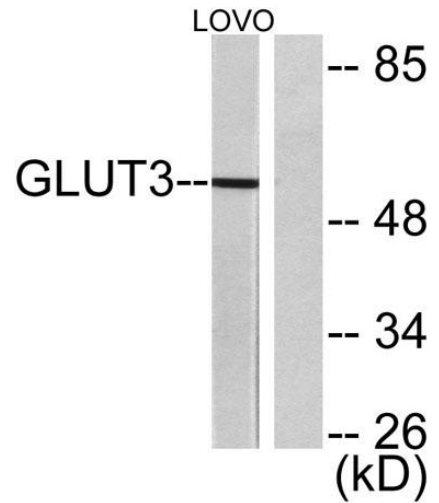
<b>Product name:</b>	GLUT3 Rabbit Polyclonal Antibody
<b>Cat number:</b>	AB-E8098
<b>Conjugate:</b>	Unconjugated
<b>Size:</b>	100 ug
<b>Clone:</b>	POLY
<b>Concentration:</b>	1mg/ml
<b>Host:</b>	Rabbit
<b>Isotype:</b>	IgG
<b>Immunogen:</b>	The antiserum was produced against synthesized peptide derived from human GLUT3. AA range:447-496.
<b>Reactivity:</b>	Human, Mouse, Rat
<b>Applications:</b>	Western Blot: 1/500 - 1/2000. Immunohistochemistry: 1/100 - 1/300
<b>Molecular Weight:</b>	55kDa
<b>Purification:</b>	The antibody was affinity-purified from rabbit antiserum by affinity-chromatography using epitope-specific immunogen.
<b>Form:</b>	Liquid
<b>Buffer:</b>	Liquid in PBS containing 50% glycerol, 0.5% BSA and 0.02% sodium azide.
<b>Storage:</b>	Store at -20°C. Avoid repeated freeze-thaw cycles
<b>Background:</b>	function:Facilitative glucose transporter. Probably a neuronal glucose transporter.,similarity:Belongs to the major facilitator superfamily. Sugar transporter (TC 2.A.1.1) family. Glucose transporter subfamily.,tissue specificity:Highly expressed in brain. Expressed in many tissues.,



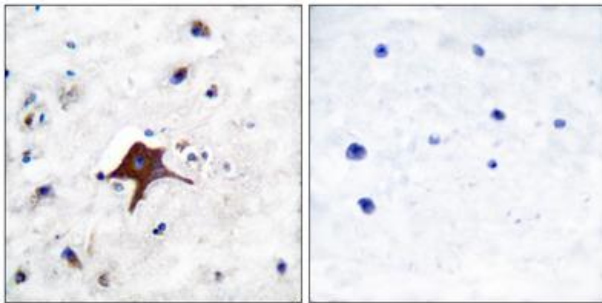
Western Blot analysis of SH-SY5Y cells using Glut3 Polyclonal Antibody diluted at 1:2000



Western blot analysis of Mouse-kidney lysis using Glut3 antibody. Antibody was diluted at 1:2000



Western blot analysis of lysates from LOVO cells, using GLUT3 Antibody. The lane on the right is blocked with the synthesized peptide.



Immunohistochemistry analysis of paraffin-embedded human brain tissue, using GLUT3 Antibody. The picture on the right is blocked with the synthesized peptide.