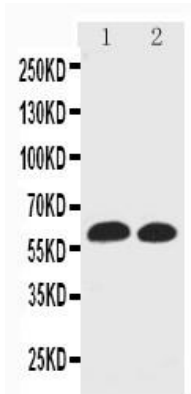
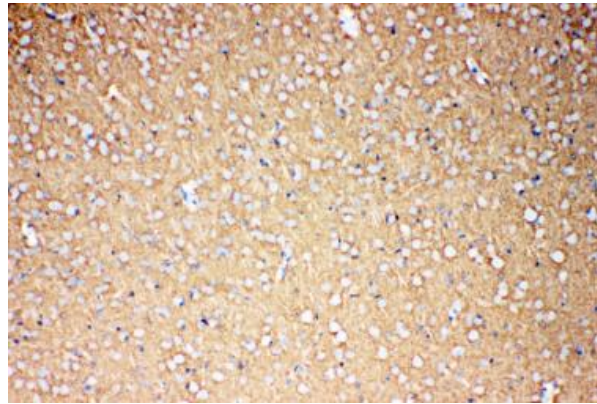

Product name:	Glutamate Transporter GLIA (GLAST /EAAT1) Rabbit Polyclonal Antibody
Cat number:	AB-82224
Conjugate:	Unconjugated
Size:	100 ug
Clone:	POLY
Concentration:	1mg/ml
Host:	Rb
Isotype:	IgG
Immunogen:	A synthetic peptide corresponding to a sequence at the Cterminus of human EAAT1(519-537aa MKKPYQLIAQDNETEKPID), different from the related rat and mouse sequences by three amino acids.
Reactivity:	Human, Mouse, Rat
Applications:	Western blot 0.1-0.5µg/ml Immunohistochemistry(Paraffin-embedded Section): 0.5-1µg/ml Immunohistochemistry(Frozen-Section): 0.5-1µg/ml
Purification:	Immunogen affinity purified
Form:	Liquid
Buffer:	Each vial contains 5mg BSA, 0.9mg NaCl, 0.2mg Na ₂ HPO ₄ ,0.05mg Thimerosal, 0.05mg Na ₃ N.
Storage:	At -20°C for one year. It can also be aliquotted and stored frozen at -20°C for a longer time. Avoid repeated freezing and thawing.
Background:	Solute carrier family 1(glial high-affinity glutamate transporter), member 3, also known as SLC1A3,EAAT1 or GLAST, is a protein that in humans is encoded by the SLC1A3 gene. This gene is a member of high affinity glutamate transporter family. SLC1A3 is mapped to chromosome 5p13.2 by fluorescence in situ hybridization(FISH). This gene transports L-glutamate and also L- and D-aspartate. It is essential for terminating the postsynaptic action of glutamate by rapidly removing released glutamate from the synaptic cleft. This gene acts as a symport by cotransporting sodium.



Anti-EAAT1 antibody, Western blotting Lane 1: Rat Brain Tissue Lysate Lane 2: Mouse Brain Tissue Lysate



Anti-EAAT1 antibody, IHC(P) IHC(P): Rat Brain Tissue