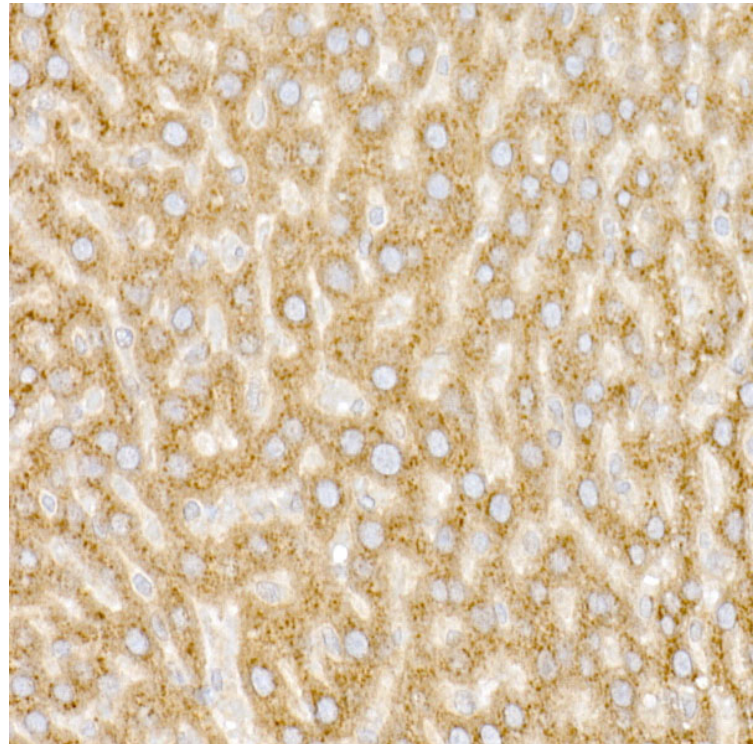
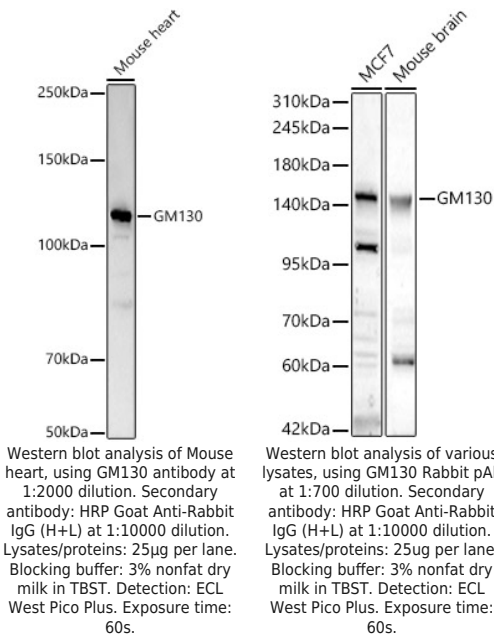
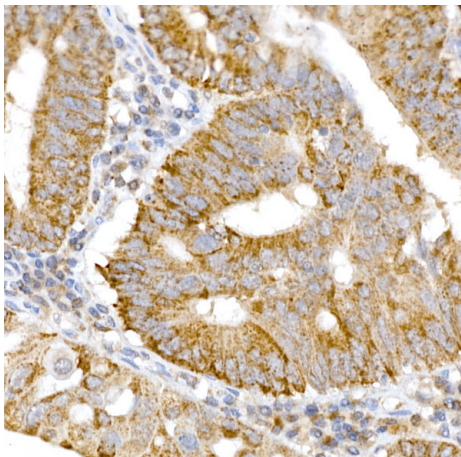
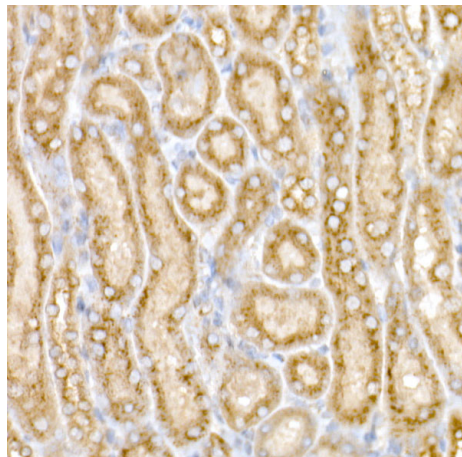

Product name:	GM-130 Rabbit Polyclonal Antibody
Cat number:	AB-83480
Conjugate:	Unconjugated
Size:	100 ug
Clone:	POLY
Concentration:	1mg/ml
Host:	Rb
Isotype:	IgG
Immunogen:	Recombinant fusion protein containing a sequence corresponding to amino acids 20-300 of human GM130 (
Reactivity:	Hu, Ms, Rt
Applications:	Western Blot: 1:1000 - 1:5000 Immunohistochemistry (paraffin-embedded tissues): 1:50 - 1:200 Immunofluorescence: 1:100 - 1:500 Immunocytochemistry: 1:100 - 1:500
Molecular Weight:	130kDa
Purification:	Affinity purification
Form:	Liquid
Buffer:	PBS with 0.05% proclin300,50% glycerol,pH7.3.
Storage:	Store at -20°C. Avoid freeze / thaw cycles.
Background:	The Golgi apparatus, which participates in glycosylation and transport of proteins and lipids in the secretory pathway, consists of a series of stacked cisternae (flattened membrane sacs). Interactions between the Golgi and microtubules are thought to be important for the reorganization of the Golgi after it fragments during mitosis. This gene encodes one of the golgins, a family of proteins localized to the Golgi. This encoded protein has been postulated to play roles in the stacking of Golgi cisternae and in vesicular transport. Several alternatively spliced transcript variants of this gene have been described, but the full-length nature of these variants has not been determined.



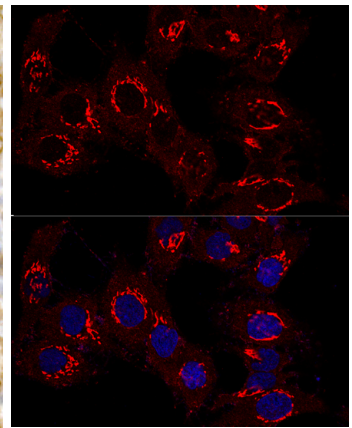
Immunohistochemistry analysis of paraffin-embedded Rat liver using GM130 antibody at dilution of 1:20 (40x lens). Perform high pressure antigen retrieval with 10 mM citrate buffer pH 6.0 before commencing with IHC staining protocol.



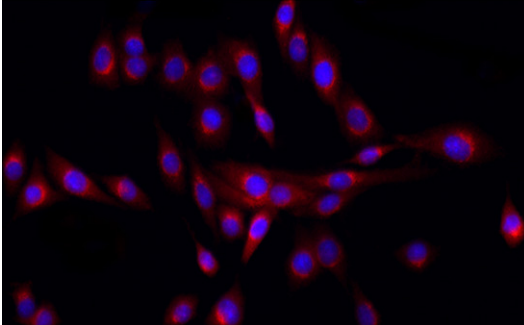
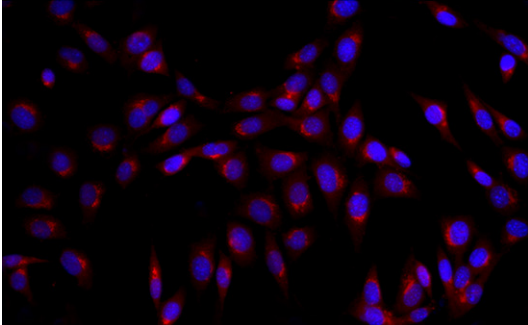
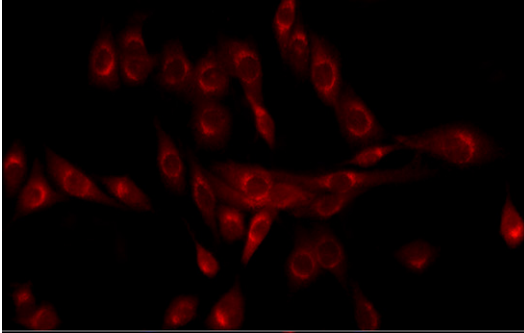
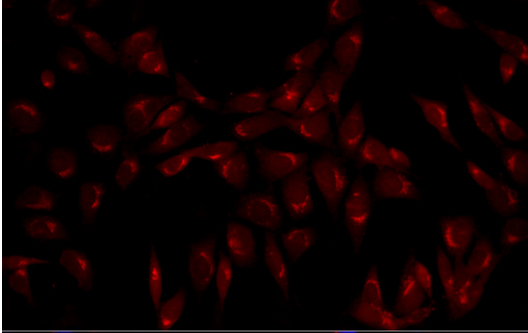
Immunohistochemistry analysis of paraffin-embedded human colon carcinoma using GM130 antibody at dilution of 1:20 (40x lens). Perform high pressure antigen retrieval with 10 mM citrate buffer pH 6.0 before commencing with IHC staining protocol.



Immunohistochemistry analysis of paraffin-embedded Mouse kidney using GM130 antibody at dilution of 1:20 (40x lens). Perform high pressure antigen retrieval with 10 mM citrate buffer pH 6.0 before commencing with IHC staining protocol.



Confocal immunofluorescence analysis of HeLa cells using GM130 antibody at dilution of 1:400. Blue: DAPI for nuclear staining.



Immunofluorescence analysis of NIH/3T3 cells using GM130 Rabbit pAb at dilution of 1:100 (40x lens). Blue: DAPI for nuclear staining.

Immunofluorescence analysis of PC-12 cells using GM130 Rabbit pAb at dilution of 1:100 (40x lens). Blue: DAPI for nuclear staining.