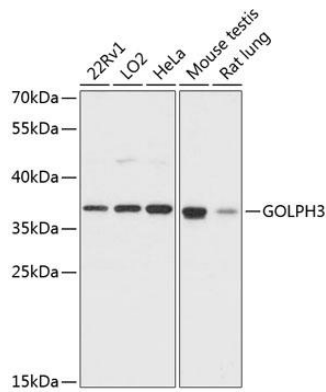
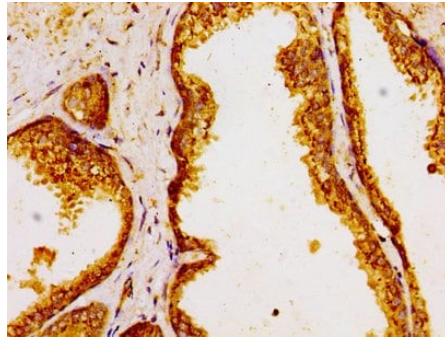
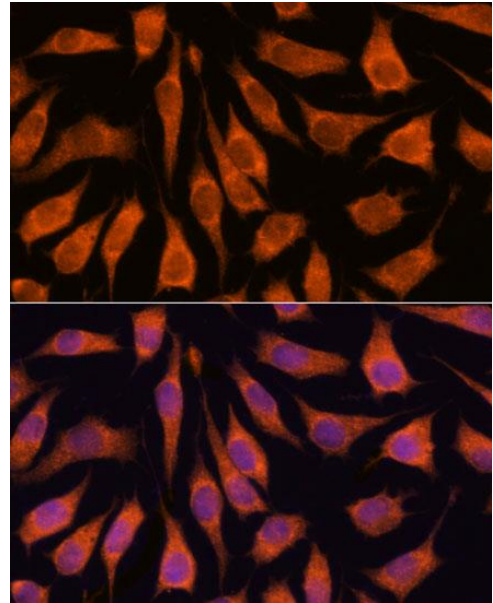

Product name:	GOLPH3
Cat number:	AB-84328
Conjugate:	Unconjugated
Size:	100ug
Clone:	POLY
Concentration:	1mg/ml
Host:	Rb
Isotype:	IgG
Immunogen:	Recombinant fusion protein containing a sequence corresponding to amino acids 1-298 of human GOLPH3.
Reactivity:	Hu, Ms, Rt
Applications:	Western Blot: 1:500 - 1:2000 Immunohistochemistry: 1:100 - 1:200 Immunofluorescence: 1:50 - 1:200
Molecular Weight:	37kDa
Purification:	Aff. Pur.
Form:	Liquid
Buffer:	PBS with 0.02% sodium azide,50% glycerol,pH7.3.
Storage:	Store at -20°C. Avoid freeze / thaw cycles.
Background:	The Golgi complex plays a key role in the sorting and modification of proteins exported from the endoplasmic reticulum. The protein encoded by this gene is a peripheral membrane protein of the Golgi stack and may have a regulatory role in Golgi trafficking. Several alternatively spliced transcript variants of this gene have been described, but the full-length nature of these variants has not been determined.



Western blot analysis of extracts of various cell lines, using GOLPH3 antibody at 1:3000 dilution. Secondary antibody: HRP Goat Anti-Rabbit IgG (H+L) at 1:10000 dilution. Lysates/proteins: 25ug per lane. Blocking buffer: 3% nonfat dry milk in TBST. Detection: ECL West Pico Plus. Exposure time: 15s.



Immunohistochemistry Paraffin-embedded human prostate cancer tissue stained for GOLPH3/MIDAS using at 1:100 dilution in immunohistochemical analysis.



Immunofluorescence analysis of L929 cells using GOLPH3 antibody at dilution of 1:100. Blue: DAPI for nuclear staining.