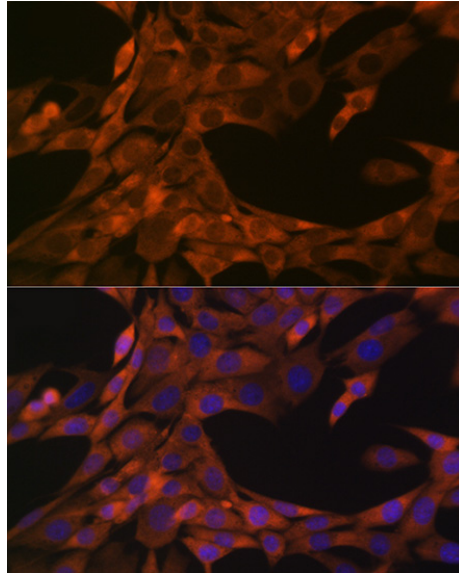
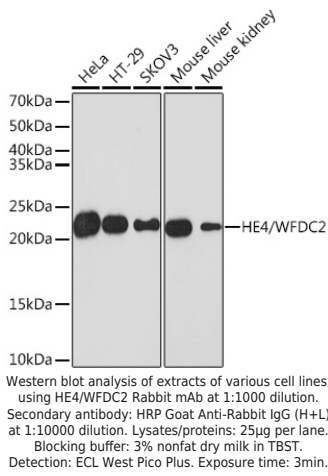
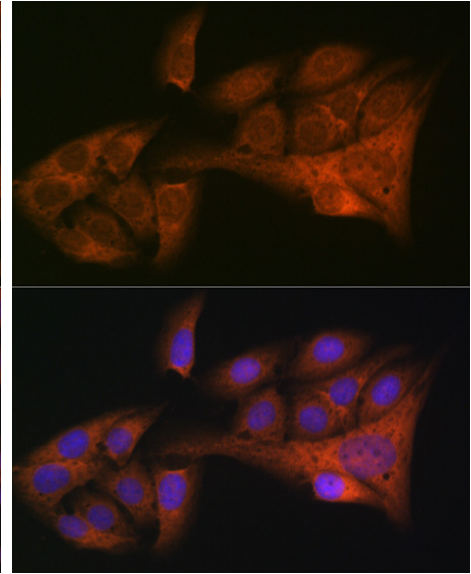

Product name:	HE4/WFDC2 Rabbit Monoclonal Antibody
Cat number:	MAB-95046
Conjugate:	Unconjugated
Size:	100 ug
Clone:	ARC1936
Concentration:	1mg/ml
Host:	Rabbit
Isotype:	IgG
Immunogen:	A synthetic peptide corresponding to a sequence within amino acids 45-124 of human HE4/WFDC2.
Reactivity:	Human, Mouse
Applications:	Western Blot: 1:500 - 1:2000 Immunofluorescence: 1:50 - 1:200 Immunocytochemistry: 1:50 - 1:200
Molecular Weight:	22 kDa
Purification:	Affinity purification
Form:	Liquid
Buffer:	PBS with 0.02% sodium azide, 0.05% BSA, 50% glycerol, pH7.3.
Storage:	Store at -20°C. Avoid freeze / thaw cycles.
Background:	This gene encodes a protein that is a member of the WFDC domain family. The WFDC domain, or WAP Signature motif, contains eight cysteines forming four disulfide bonds at the core of the protein, and functions as a protease inhibitor in many family members. This gene is expressed in pulmonary epithelial cells, and was also found to be expressed in some ovarian cancers. The encoded protein is a small secretory protein, which may be involved in sperm maturation.



Immunofluorescence analysis of NIH-3T3 cells using HE4/WFDC2 Rabbit mAb at dilution of 1:100 (40x lens). Blue: DAPI for nuclear staining.



Immunofluorescence analysis of U-2 OS cells using HE4/WFDC2 Rabbit mAb at dilution of 1:100 (40x lens). Blue: DAPI for nuclear staining.