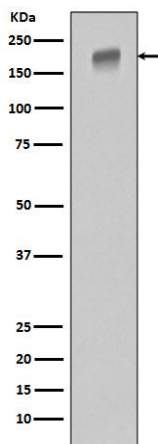
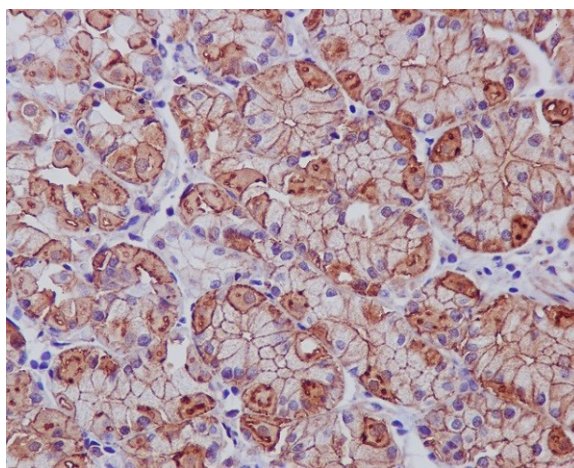


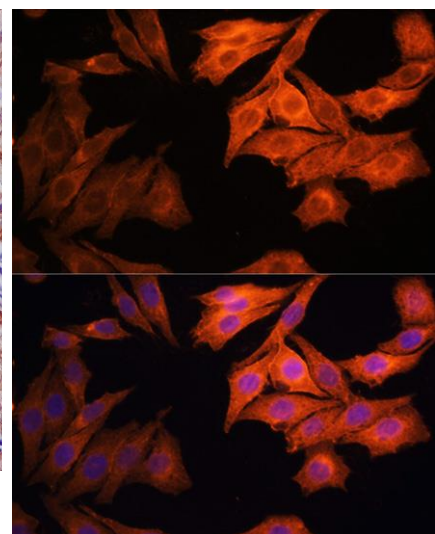
<b>Product name:</b>	HER1 / EGFR
<b>Cat number:</b>	MAB-94446
<b>Size:</b>	100 ug
<b>Clone:</b>	IS-23
<b>Concentration:</b>	1mg/ml
<b>Host:</b>	Ms
<b>Isotype:</b>	IgG2b
<b>Immunogen:</b>	A synthesized peptide derived from human EGFR (ErbB 1) Antibody EGFR is a receptor tyrosine kinase. Receptor for epidermal growth factor (EGF) and related growth factors including TGFalpha, amphiregulin, betacellulin, heparin-binding EGF-like growth factor, GP30 and vaccinia virus growth factor. Is involved in the control of cell growth and differentiation.
<b>Reactivity:</b>	Hu, Ms, Rt
<b>Applications:</b>	Western Blot: 1:500-1:2000 Immunohistochemistry: 1:50-1:100 Immunocytochemistry: 1:50- 1:200 Immunofluorescence: 1:50-1:200 Immunoprecipitation: 1:50-1:200
<b>Molecular Weight:</b>	175kDa
<b>Purification:</b>	Affinity-chromatography
<b>Form:</b>	Liquid
<b>Buffer:</b>	PBS with 0.02% sodium azide,50% glycerol,pH7.3.
<b>Storage:</b>	Store at +4°C short term. Store at -20°C long term. Avoid freeze / thaw cycle



Western blot analysis of extracts of OVCAR3 cells, using EGFR Rabbit pAb at 1:1000 dilution. Secondary antibody: HRP Goat Anti-Rabbit IgG (H+L) at 1:10000 dilution. Lysates/proteins: 25ug per lane. Blocking buffer: 3% nonfat dry milk in TBST. Detection: ECL West Pico Plus. Exposure time: 10s.



IHC analysis of EGFR using anti-EGFR antibody on paraffin-embedded human stomach cancer. EGFR was detected in paraffin-embedded section. Heat mediated antigen retrieval was performed in citrate buffer (pH6, epitope retrieval solution) for 20 mins. The tissue section was blocked with 10% goat serum. The tissue section was then incubated with 1ug/ml rabbit anti-EGFR Antibody overnight at 4°C. Biotinylated goat anti Rabbit IgG antibody was used as secondary antibody and incubated for 30 minutes at 37°C. The tissue section was developed using Streptavidin-Biotin-Complex (SABC) with DAB as the chromogen.



Immunofluorescence analysis of HeLa cells using EGFR antibody at dilution of 1:100. Blue: DAPI for nuclear staining.