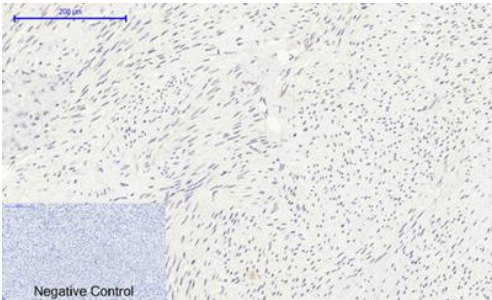
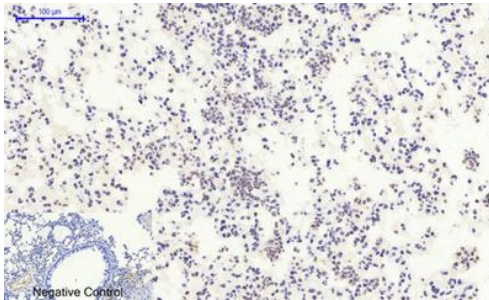


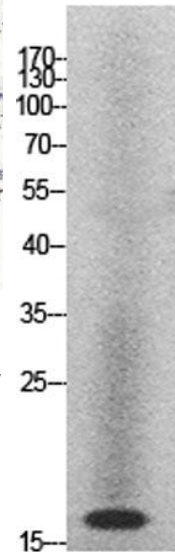
<b>Product name:</b>	HISTONE H2A Rabbit Polyclonal Antibody
<b>Cat number:</b>	AB-E8591
<b>Conjugate:</b>	unconjugated
<b>Size:</b>	100 ug
<b>Clone:</b>	Polyclonal
<b>Concentration:</b>	1mg/ml
<b>Host:</b>	Rabbit
<b>Isotype:</b>	IgG
<b>Immunogen:</b>	Synthesized peptide derived from the Internal region of human Histone H2A. 20-50
<b>Reactivity:</b>	Human, Mouse, Rat
<b>Applications:</b>	Western Blot 1:500- 1:2000 IHC(p) 1:100-1:300 Elisa: 1:20000 &nbsp;
<b>Molecular Weight:</b>	15kd
<b>Purification:</b>	affinity purified
<b>Form:</b>	Liquid
<b>Buffer:</b>	PBS containing 50% glycerol, 0.5% BSA and 0.02% sodium azide
<b>Storage:</b>	Store at -20°C. Avoid repeated freeze-thaw cycles.
<b>Background:</b>	<p>Histones are basic nuclear proteins that are responsible for the nucleosome structure of the chromosomal fiber in eukaryotes. Two molecules of each of the four core histones (H2A, H2B, H3, and H4) form an octamer, around which ,approximately 146 bp of DNA is wrapped in repeating units,called nucleosomes. The linker histone, H1, interacts with linker DNA between nucleosomes and functions in the compaction of chromatin into higher order structures. This gene is intronless and encodes a replication-dependent histone that is a member of the histone H2A family. Transcripts from this gene lack polyA tails but instead contain a palindromic termination element.</p>



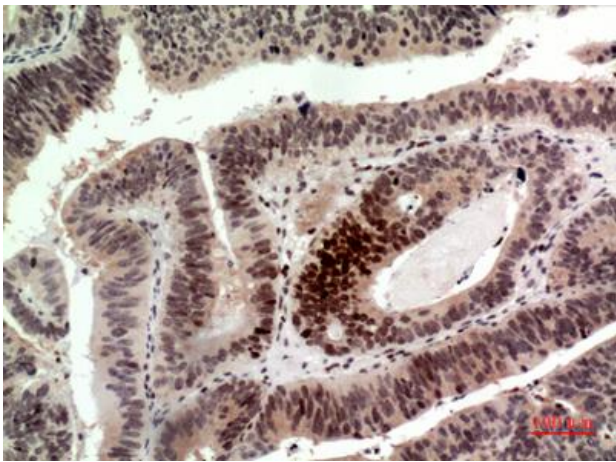
Immunohistochemical analysis of paraffin-embedded Human-uterus tissue. Histone H2A Polyclonal Antibody was diluted at 1:200(4°C,overnight). Sodium citrate pH 6.0 was used for antibody retrieval(&gt;98°C,20min).Secondary antibody was diluted at 1:200



Immunohistochemical analysis of paraffin-embedded Mouse-lung tissue. 1,Histone H2A Polyclonal Antibody was diluted at 1:200(4°C,overnight). Sodium citrate pH 6.0 was used for antibody retrieval(&gt;98°C,20min). Secondary antibody was diluted at 1:200(room temp., 30min). Negative control was used by secondary antibody only.



Western Blot analysis of HeLa cells using Histone H2A Polyclonal Antibody. Secondary antibody was diluted at 1:20000 cells nucleus extracted



Immunohistochemical analysis of paraffin-embedded human-colon-cancer, antibody was diluted at 1:100