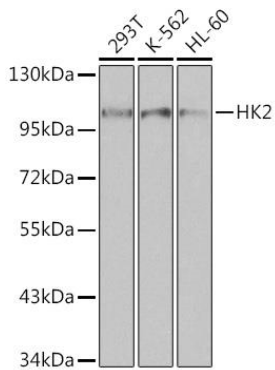
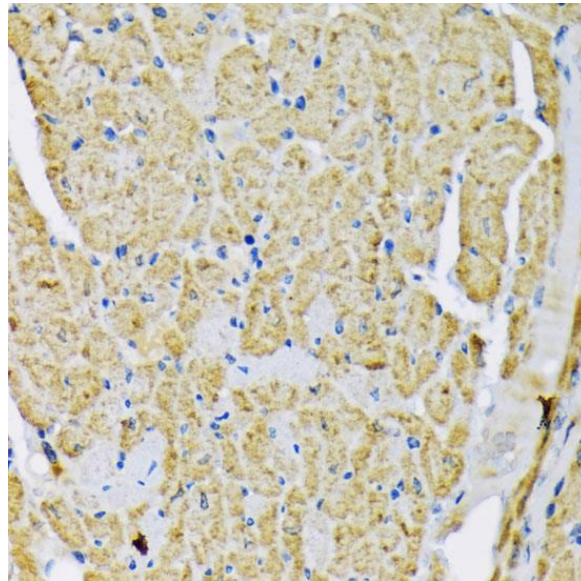


---

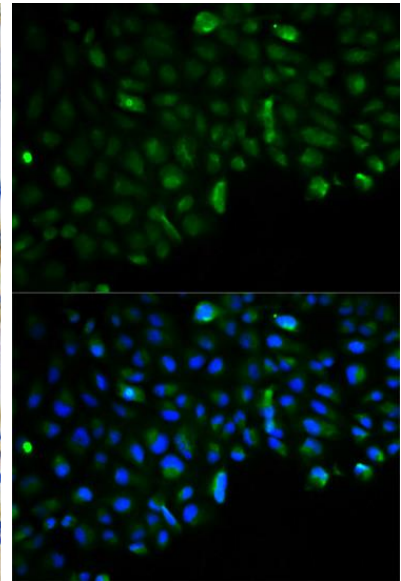
<b>Product name:</b>	HK2
<b>Cat number:</b>	AB-84305
<b>Size:</b>	100ug
<b>Clone:</b>	POLY
<b>Concentration:</b>	1mg/ml
<b>Host:</b>	Rb
<b>Isotype:</b>	IgG
<b>Immunogen:</b>	Recombinant fusion protein containing a sequence corresponding to amino acids 1-120 of human HK2
<b>Reactivity:</b>	Hu, Ms, Rt
<b>Applications:</b>	Western Blot: 1:500 - 1:2000 Immunohistochemistry: 1:50 - 1:200 Immunofluorescence: 1:50 - 1:200
<b>Molecular Weight:</b>	102kDa
<b>Purification:</b>	Aff. Pur.
<b>Form:</b>	Liquid
<b>Buffer:</b>	Liquid in PBS containing 0.02% sodium azide, 50% glycerol, Ph7.3.
<b>Storage:</b>	Store at -20°C, and avoid repeat freeze-thaw cycles.
<b>Background:</b>	Hexokinases phosphorylate glucose to produce glucose-6-phosphate, the first step in most glucose metabolism pathways. This gene encodes hexokinase 2, the predominant form found in skeletal muscle. It localizes to the outer membrane of mitochondria. Expression of this gene is insulin-responsive, and studies in rat suggest that it is involved in the increased rate of glycolysis seen in rapidly growing cancer cells.



Western blot analysis of extracts of various cell lines, using HK2 antibody at 1:10000 dilution. Secondary antibody: HRP Goat Anti-Rabbit IgG (H+L) at 1:10000 dilution. Lysates/proteins: 25ug per lane. Blocking buffer: 3% nonfat dry milk in TBST.



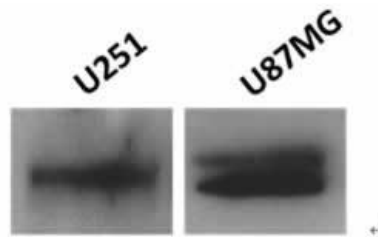
Immunohistochemistry of paraffinembedded mouse heart using HK2 antibody at dilution of 1:200 (40x lens).



Immunofluorescence analysis of U2OS cells using HK2 antibody. Blue: DAPI for nuclear staining.



Review for HK2 Rabbit Experiment Type Western blot(WB)



Experiment Type Western blot(WB)  
SampleU251,U87MG Description Western blot analysis of extracts of various cell lines, using HK2 Polyclonal Antibody.